



Welcome to

Parents' Briefing Primary 5

30 January 2026

FUTURE-READY LEADERS WITH THE HEART FOR OTHERS

Outline of Today's Sharing

1

Cyber Wellness

2

Direct School Admission (DSA)

3

**Information on PSLE Scoring and
S1 Posting Exercise**



PUNGGOLGREEN
PRIMARY SCHOOL



Mrs Teo-Tay Chai Hong

Vice Principal

FUTURE-READY LEADERS WITH THE HEART FOR OTHERS

Cyber Wellness

It's more than saying no to devices.

Why Should We Be Concerned about Cyber Wellness?

The data may surprise you.

Did you know?

Our children are **going online from a younger age**.

67% of children aged 7 to 9, and **85%** for those aged 10 to 12 in Singapore use **smartphones** every day, and are active on **social media**.

However, research has shown that both **screen time** and **type of screen use** (educational vs recreational) can impact our **children's well-being**.

Source: Milieu Insights, [reported by the Straits Times](#) (Feb 2021)

What does this mean?

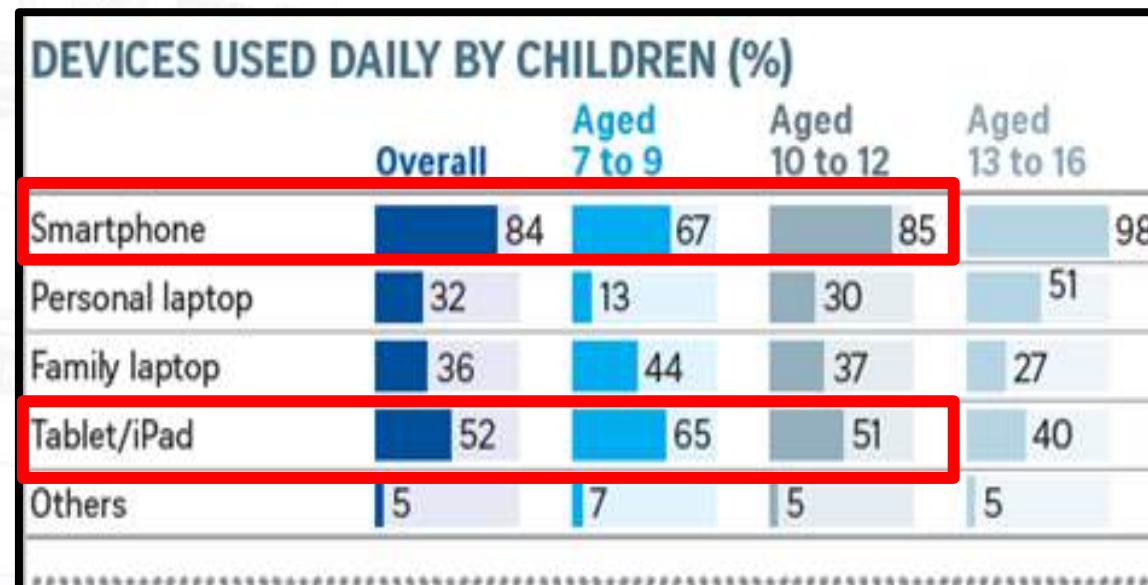
We need to help our children achieve **balanced and purposeful** screen use.

#1 **Resources** on balanced and purposeful screen use are available at the end of the presentation.



CURRENT REALITY
Children are going online from a younger age

CURRENT REALITY
Two-thirds of these children use a smartphone and/or a tablet/iPad daily.



Did you know?

A survey of 600 parents in Singapore revealed the types and frequency of **harmful content** our children are exposed to, including cyberbullying, sexual grooming, and sexual harassment.

However, **not all parents are aware** of the **online risks**.

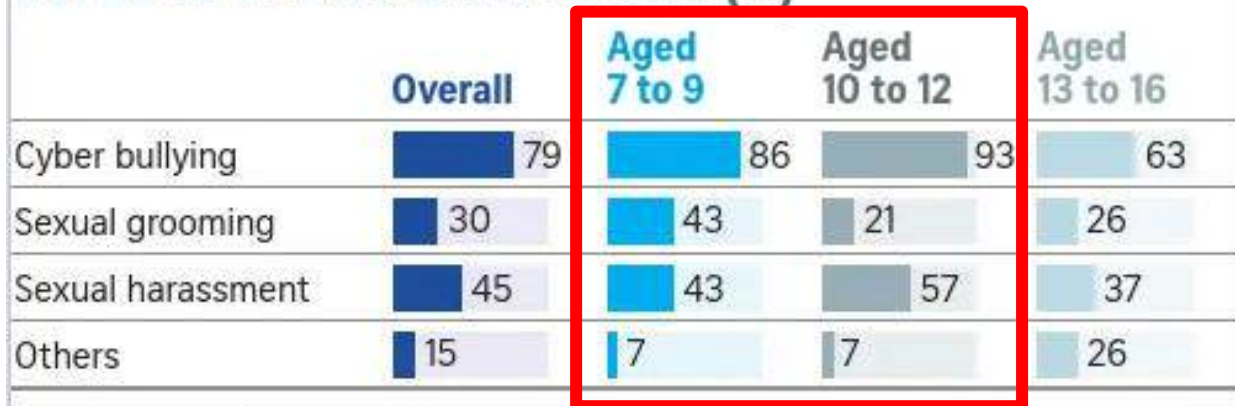
Source: Milieu Insights, [reported by the Straits Times](#) (Feb 2021)

What does this mean?

We need to be **involved** in our children's digital lives, and put in **parental controls** to keep them safe and role-model for responsible use.

#2 **Resources** on parental controls are available at the end of the presentation.

TYPES OF ONLINE HARASSMENT (%)



NOTE: This question was posed only to parents who reported that their children had faced online harassment. The poll is subject to a margin of error that is comparable with other research surveys.

Source: MILIEU INSIG
STRAITS TIMES GRAPHICS

CURRENT REALITY

Types and frequency of harmful content our children are exposed to

Source: Milieu Insights, *reported by the Straits Times* (Feb 2021)

Parents might not be aware, but...

1 in 3 children has chatted with strangers online

1 in 3 children has been exposed to pornographic materials

1 in 4 children has overshared their personal information

Source: *MLC-TOUCH Parent Child Poll Findings* (30 Nov 2023)



Source: *MDDI Survey* (Feb 2024)

Did you know?

Most social media platforms and popular games have **App Store age-ratings**:

- **12+** : WhatsApp, Instagram, Roblox
- **17+** : Telegram and Discord

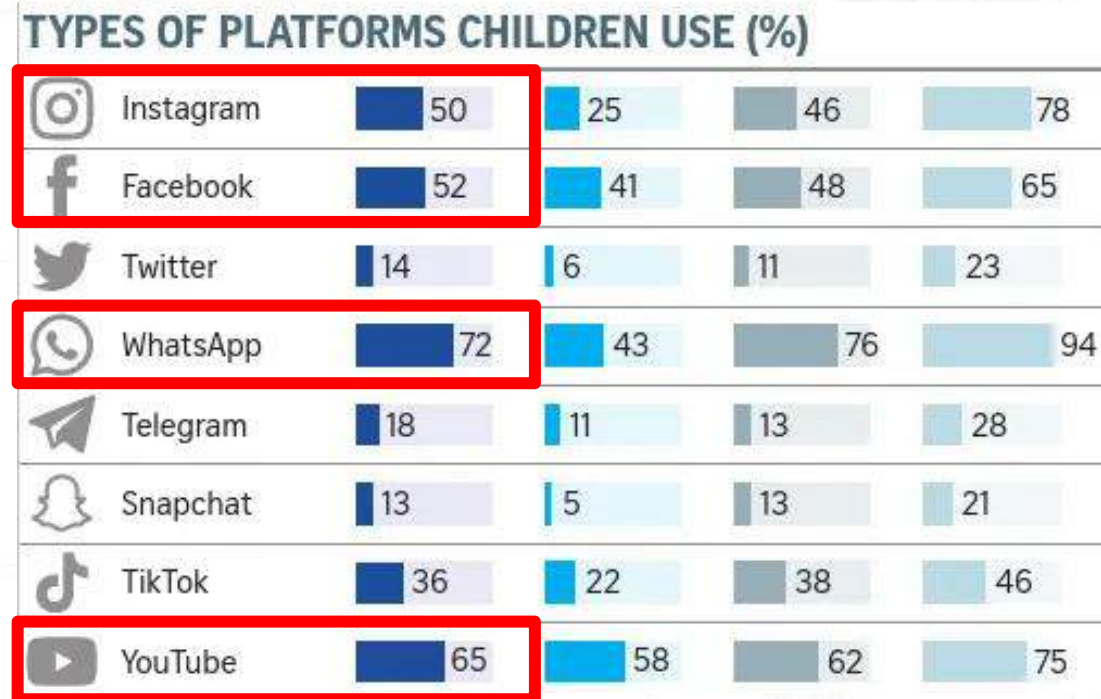
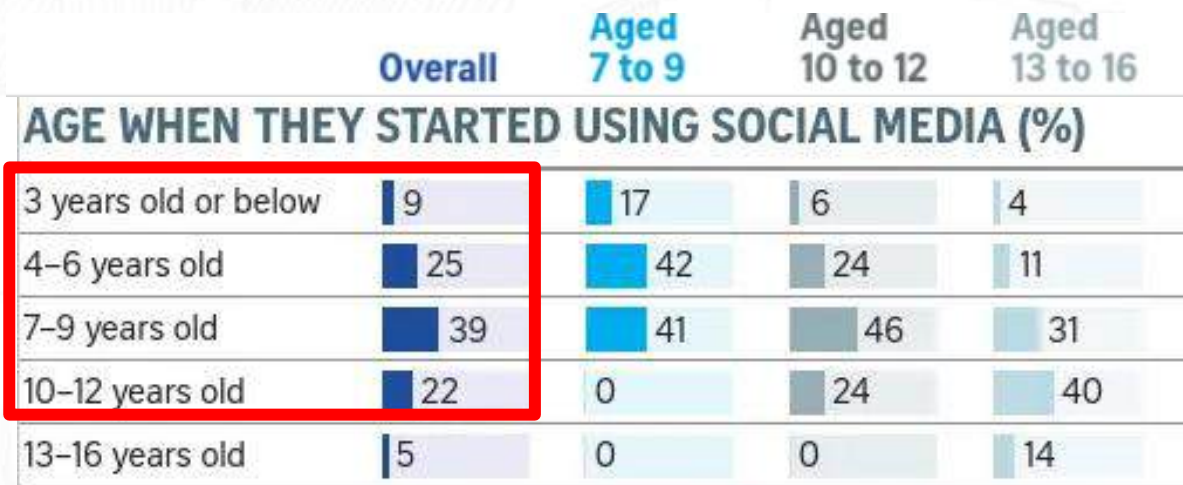
But the **majority of our children** have access to social media **before the recommended ages**.

Research shows that **screen use (smartphone and social media access) in young children** is associated with: insufficient good quality sleep, sedentary behaviours, obesity, and mental health and well-being .

What does this mean?

We need to ensure our children's use of devices and platforms are **age-appropriate**, and have **open conversations** with them about their digital habits.

#3 Resources from Grow Well SG are available at the end of the presentation.



CURRENT REALITY

About
a third
of parents



with children aged
seven to 12 said they
had Instagram accounts

Source: Milieu Insights, [reported by the Straits Times](#) (Feb 2021)

What is Cyber Wellness?

Cyber Wellness is the ability of our children and youth to navigate the cyberspace safely.

This is done through our **Character and Citizenship Education (CCE) curriculum** which aims to:

- **equip students with the knowledge and skills** to harness the power of Information and Communication Technology (ICT) **for positive purposes**;
- maintain a **positive presence in cyberspace**; and
- be **safe and responsible users of ICT**.

Through the curriculum, your child learns knowledge and skills to have **balanced screen use, be safe online, and exhibit positive online behaviours**.

Resources

Scan here to find out more about MOE's Cyber Wellness curriculum:



<https://go.gov.sg/moe-cw-education>

What Will Your Child Learn in School?

Find out what your child will learn about **Cyber Wellness** during **CCE (FTGP)*** lessons and other programmes.

***Character and Citizenship Education (Form Teacher Guidance Period)**

Primary 5 and 6

During
CCE(FTGP)
lessons,
students will
be taught:

Be a positive peer influence online and manage digital footprints

- Speak up and stand for what is right regardless of peer pressure
- Seeking help from trusted adults/sources when needed
- Awareness of permanence of online data and review privacy settings

Importance of cybersecurity

- Protect oneself from phishing, spam, scams and hacking

How to verify online falsehoods

- Use S.U.R.E.* to verify information online

Staying Safe from Pornography

- Understand the impact of pornography on themselves and others
- Reject pornographic content using the 'Stop-Think-Do' strategy.
- Know that keeping, selling, sharing or forwarding pornographic materials is an offence

*S.U.R.E. stands for **S**ource, **U**nderstand, **R**esearch, **E**valuate.*

It is part of National Library Board's Information Literacy Programme.



Encourage our children to share their experiences as they navigate friendships.

How Can We Partner Up?

Together, we can raise happy, kind and confident children, ready to thrive in the digital world.

3 areas we can work together on to foster School-Home Partnership

1 Respectful Communication

Our children do best when schools and parents work hand in hand to support them.

2 Role Models

3 Real Connections



Respectful Communication

Listen, understand, and foster kind words and actions between you and your child.



Have regular and genuine conversations with your child

- to better understand what they do online,
- how to stay safe,
- how to use technology in a responsible manner.

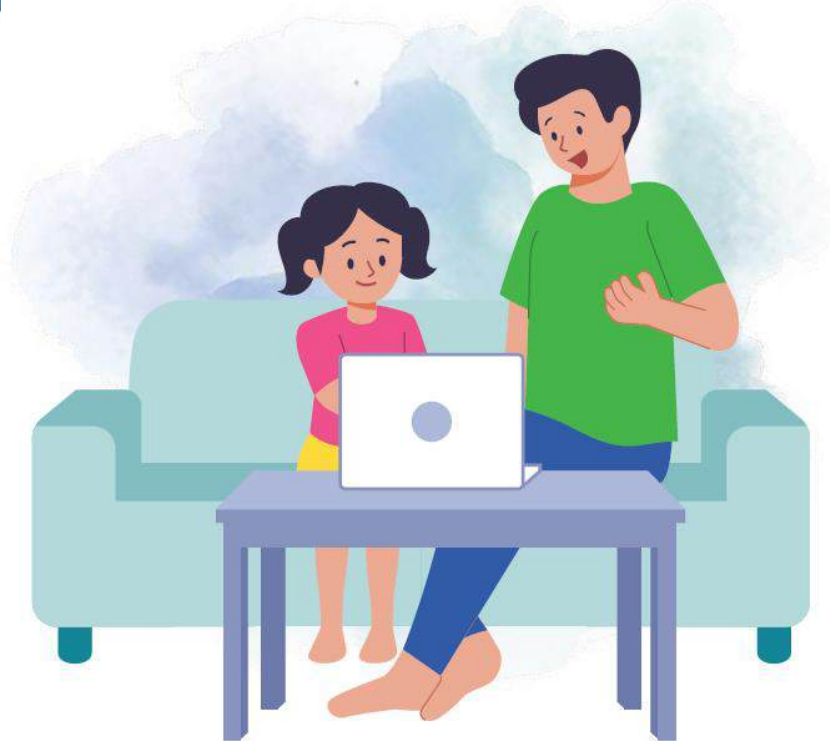


Communicate your actions and rationale.

- Let your child know **you care for them** and **want them to be safe online.**



Discuss with your child as you set parental controls to manage device use and stay safe online.



#4

Resources on having open conversations about digital habits are available at the end of the presentation.

Role Models

You play a key role helping your child establish healthy digital habits and learn to use technology in a positive and meaningful way.



Role model healthy use of devices and social media, and good online behaviour for your child/ward.

- E.g. parents/guardians not using devices during mealtimes, respectful online communication



Role modelling respectful conversations.

- You are in the best position to role model these skills through daily interactions with your child.
- **Listen to understand first**, instead of jumping straight into giving advice and solutions.



#5 Resources on role modelling respectful communication are available at the end of the presentation.

Real Connections

Cultivate strong relationships and healthy habits in this digital age.



Provide a safe space for conversations

- Children may hesitate to share their true thoughts and feelings with their parents, as they fear being judged or misunderstood.
- Let your child know that it is **normal to feel or think the way they do**. Help them **feel safe** expressing themselves with you.



Provide a balanced mix of engaging online and offline activities

- **Discuss and develop a timetable** with your child to moderate their time spent on screens.
- Children aged 7 – 12 should have **consistent screen time limits** (less than 2 hours daily, excluding school work).



#6 Resources on providing a safe space for conversation are available at the end of the presentation.

Additional Resources

Bite-sized practical tips and strategies to help you parent effectively in the digital age.

Additional Resources:

Parenting for Wellness



For more bite-sized, practical tips and strategies on building strong parent-child relationships, supporting your child's mental well-being and parenting in the digital age, scan the QR code above to download a copy of the **Parenting for Wellness Toolbox for Parents**.

You can also access the **Parenting for Wellness website** on Parent Hub (hosted by HPB) for personalised access to the full content!

Scan here to
access the PfW
Toolbox for Parents:



Positive Use Guide on Technology and Social Media

Scan here to access
the Positive Use Guide:



The **Positive Use Guide on Technology and Social Media** draws on research to support families as they navigate the digital landscape together. It offers strategies for balanced screen time, how to build healthier digital habits and provides tools like self-check worksheets and curated resources. Scan the QR code on the left to access the guide on the Digital for Life website.

Positive Use Guide

Evidence-Based Insights on the Impact of Digital Devices
on Child and Adolescent Wellbeing



Compilation of Useful Resources

You can access all digital parenting resources shared throughout this slide deck by scanning this QR code.

#15 Resources on tips and strategies to support your child when they might be a cyberbully are available at the end of the presentation.

These resources focus on:

- Managing Device Use
- Respectful Communication
- Role-modelling healthy habits
- Fostering Real Connections
- Unlocking their First Smartphone or Smartwatch
- Playing Online Games
- Accessing their First Social Media Accounts
- Cyberbullying
- Parenting for Wellness
- Positive Use Guide
- Grow Well SG



<https://go.gov.sg/cwresources-parents>

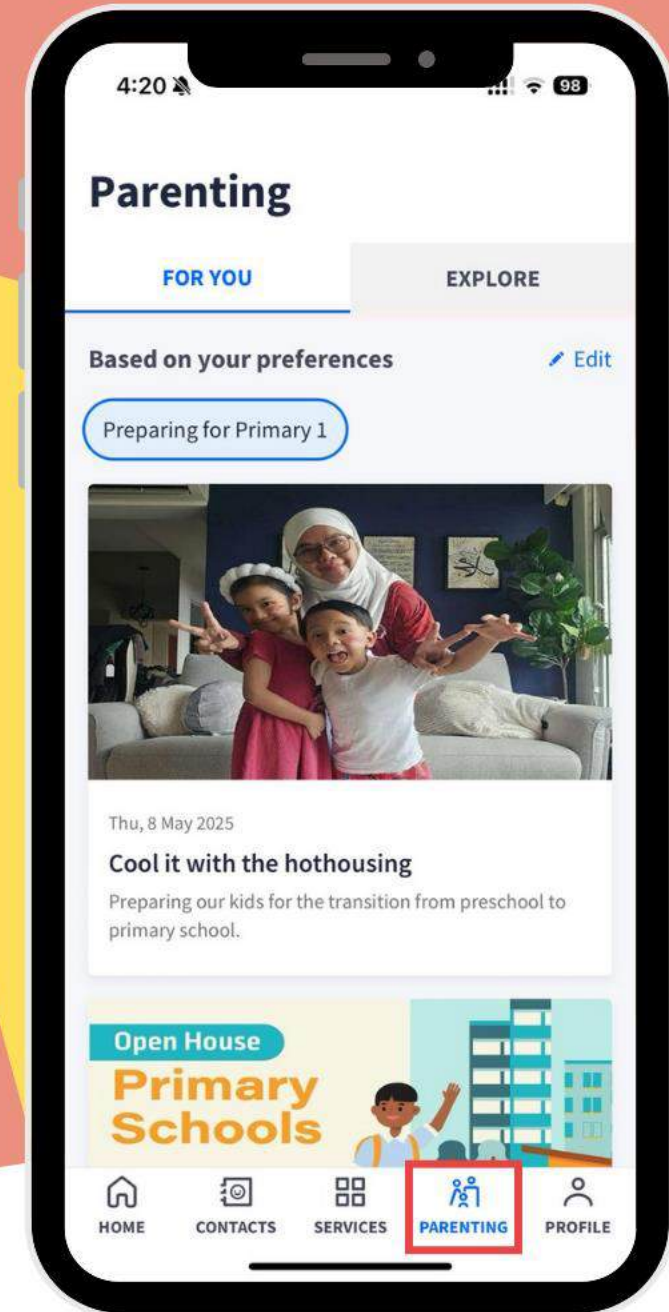




Parenting Resources on Parents Gateway (PG)



Discover rich and customisable parenting resources on topics such as preparing for Primary 1, forging parent-child relationships and education pathways.





Begin your parenting journey with us

@parentingwith.moesg

Follow us on Instagram for bite-sized and actionable parenting tips to tackle the everyday demands of parenting.



Evolution of Singapore's Education System

Industrialisation



Skills/Capital Intensive



Knowledge Based



Innovation Driven
(2012 Onwards)



Survival Driven
(1959 – 1978)



Efficiency Driven
(1979 – 1996)



Ability Based,
Aspiration Driven
(1997 – 2011)



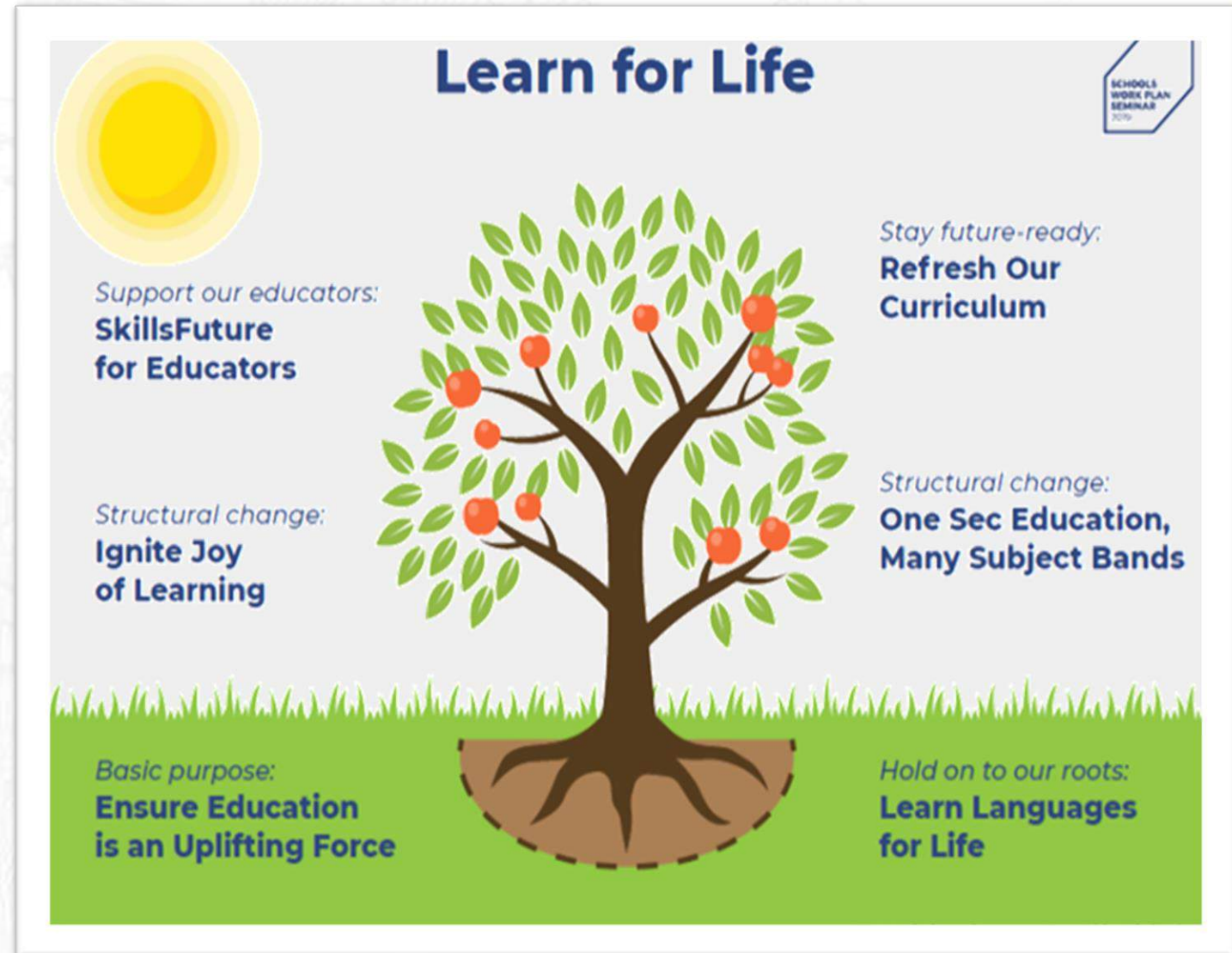
Student-centric,
Values Driven
(2012 Onwards)



Learn For Life

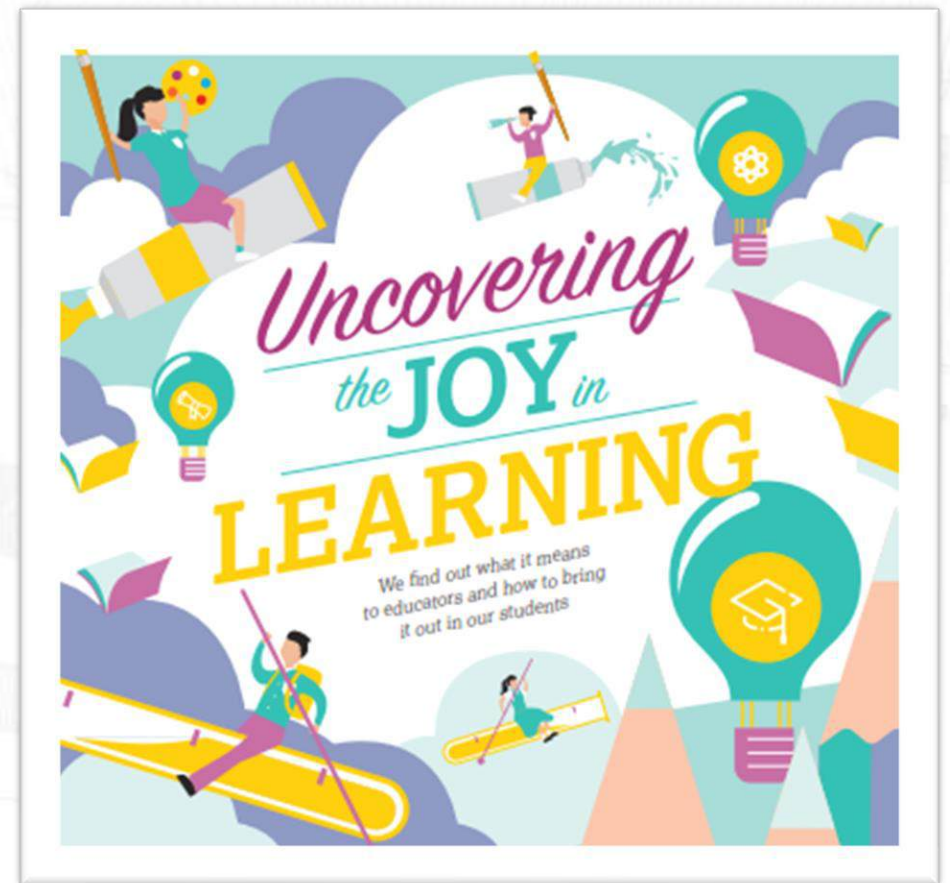
New phase of our education system

- **Develop** diverse **strengths** and **interests** of our students,
- **Nurture** an **intrinsic motivation** to learn
- **Ensure** every child has a **good start** in life and can **access opportunities** at every stage of their lives.



Nurturing the Joy of Learning

- **Reduction of School-Based Assessment Load**
 - Holistic assessments in primary schools
 - Removal of mid-year exams for P3 to P6
- **Changes to PSLE Scoring**
 - Reduce overly-fine differentiation between students & unnecessary competition
- **Broadened Definition of Merit in Admissions**
 - Expansion of Direct School Admission (DSA) and refinement to DSA policy
 - Aptitude-based admissions in IHLs



Primary School → Secondary School

**S1 Posting
Exercise**



**Direct School
Admission-
Secondary
(DSA - Sec)**

Pathways to Secondary School



PSLE/S1 Posting Exercise

- Based on a student's **PSLE score** (Total AL score)
- Most students enter secondary schools this way



Direct School Admission-Secondary (DSA - Sec)

- Based on a diverse range of **talents and achievements** in specific academic subjects or non-academic areas, beyond what the PSLE recognizes
- Allows students to **access school programmes** to develop their talents

Direct School Admission-Secondary (DSA-Sec)



What is DSA-Sec?

- Direct School Admission for secondary schools (DSA-Sec) allows students to gain direct entry to certain secondary schools **based on their talent in sports, CCAs and specific academic areas**, before taking the PSLE.
- The DSA scheme was introduced in 2004 to **promote holistic education** by recognising a diverse range of talents **beyond academic grades**. It **provides an alternative pathway** for students to enter secondary schools and develop their potential in these talent areas, which can range across areas **such as sports, arts and leadership**.
- Every secondary school offers distinctive programmes and sets its own selection process and criteria to **admit up to 20% of its students with talents** who can be further developed by their programmes.

Who should consider DSA-SEC?

- DSA recognises students who have a **strong interest or talent** that can be further developed in secondary schools.
- Consider if your child has an interest that they are **passionate** about.
- Has your child been **consistently pursuing** a particular talent/ interest for a **significant period of time** in primary school?



Who should consider DSA-SEC?

P6 students can apply for DSA-Sec based on a wide-range of talents, including:

- Sports and Games
- Visual, Literary and Performing Arts
- Debate and Public Speaking
- Science, Mathematics and Engineering
- Languages and Humanities
- Uniformed Groups
- Leadership (For example, Prefects)

Applicants who do not have prior experience may also apply.

The school will assess applicants based on the selection criteria, which may include assessing the potential of the applicants.

Is DSA-Sec suitable for my child?



Talent

Commitment

Passion

If your child has specific **talents** which a school offers the DSA in, and is **passionate** about and **committed** to developing their strengths and interests...

DSA-Sec ensures they can continue developing their talents and passion in a supportive environment in secondary school.

Is DSA-Sec suitable for my child?

SCHOOLBAG

ary Secondary Post-Secondary Special Education Lifelong Learning Interactive Stories

Is DSA for your child?

This and other questions answered by two teachers, who sit on the DSA committees of their schools. Does your child need to have won medals to qualify? Do they need to give perfect answers at the interview or show a polished portfolio? Read on to find out.

21 May, 2021



Scan the QR code to read insights from two secondary school teachers.

- DSA-Sec is not a pathway that suits every student.
- Consider **your child's strengths and interests**, and the **school's programmes** and its ability to develop your child's talent and passion.

Is DSA-Sec suitable for my child?

In general, applicants must be able to demonstrate their talent, potential, passion and character through their school track record and online DSA-Sec applications. For example, **your child might have:**

- Represented the school in a CCA.
- Held a role in a play or performance.
- Done well in a subject such as Mathematics or creative writing.
- Held a leadership role in class or a CCA.

Note:

If your child is admitted through DSA-Sec, they must commit to their chosen school for the duration of the programme.

They are not allowed to transfer to another secondary school.

What is the selection process like?

- The selection process differs across schools, and across different DSA-Sec categories.
- In general, schools are looking for candidates with:

Talent, Passion and Commitment

- Schools may look at **achievements** and **participation** (e.g. in Junior Sports Academy).
- Schools may also conduct interviews, auditions and/or trials to identify students with **strengths, or strong fundamentals and potential** in particular areas.

Strong Personal Qualities

- Schools may look at CCA records and Values in Action (VIA) participation.
- Schools have refined their DSA selection processes to recognise diverse strengths, and take into consideration potential, interest, character, resilience and drive.

Good Academic Fit

- Schools may look at primary school results to ensure students can benefit from the school's pace of learning.

Note: No testimonial from primary school is required

Possible DSA Outcomes

- **Confirmed Offer (CO)** – Your child has a place reserved in the school.
- **Waitlist (WL)** – This means your child will only be considered if other students with Confirmed Offer choose not to go to that school during the School Preference stage. Allocation will be based on students' rank on the school's Wait List.
- **Unsuccessful** – If your child is unsuccessful in all their applications, but still wish to enter the school your child applied for in the DSA, your child can consider them again during the Secondary 1 Posting (S1 Posting) Exercise based on his/her PSLE results.

DSA Timeline at Primary 6



Jan - May



May-June



Mid-September



End-October



End-November



**Explore
school
choices**

**Apply through
DSA-Sec Portal**

**Attend e-interviews
and e-auditions**

**Select preferred
Secondary schools**

**Receive school
allocation results
along with PSLE
results**

Visit schools' websites for their selection process and schedule

ONLY for shortlisted candidates.
Secondary schools will inform you of the DSA outcome by late September.

Choose up to 3 choices in order of preference if you receive offer from multiple schools.

DSA-Sec Application opens only in Primary 6. So, why have the briefing now?



*Journey with your child to
shortlist suitable schools
together starting from this
year.*

Have conversations with your child

1. Discuss with your child about their talents, strengths and interests.
2. Shortlist possible schools that cater to them.
3. Join and contribute to a school-based CCA until their P6 year, **or** an external talent group and keep the school posted.
4. Document your child's achievements to prepare for DSA interviews.

Let your child take the lead

THE STRAITS TIMES

Forum: DSA not a back-up plan – it must be a careful choice

Forum: DSA not a back-up plan – it must be a careful choice

[Sign up now](#): Get ST's newsletters delivered to your inbox

Follow topic: Today's Letters +

Published Sep 15, 2025, 05:00 AM
Updated Sep 15, 2025, 05:00 AM

We thank Ms
Admission (C
results, Sept
The DSA sch
recognising
alternative n

SCHOOLBAG

Secondary Post-Secondary Special Education Lifelong Learning Interactive Stories

Parent's Take on DSA: "Let your child take the lead"

21 May, 2021



Consider if DSA-Sec is a suitable pathway for your child based on:

- A holistic assessment of your **child's strengths and interests**
- The **school's programmes** and its ability to develop your child's talent and passion



SUPPORT FOR INTERESTED DSA-SEC APPLICANTS IN PGPS

FUTURE-READY LEADERS WITH THE HEART FOR OTHERS

Guiding your child through their educational journey



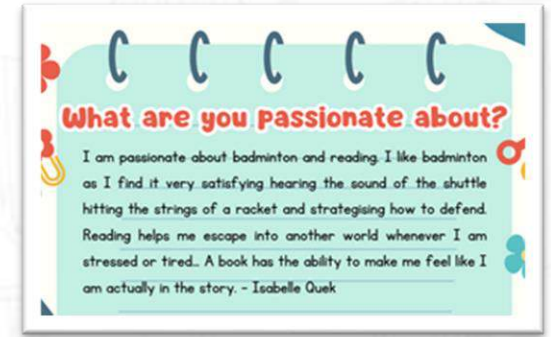
P5 & P6 ECG Bazaar

- Secondary schools are invited to showcase their programmes.
- Students have the opportunity to learn about the distinctive programmes offered by various schools.
- Students are guided to shortlist schools that best suit their interests and needs.



P5 & P6 ECG Forum

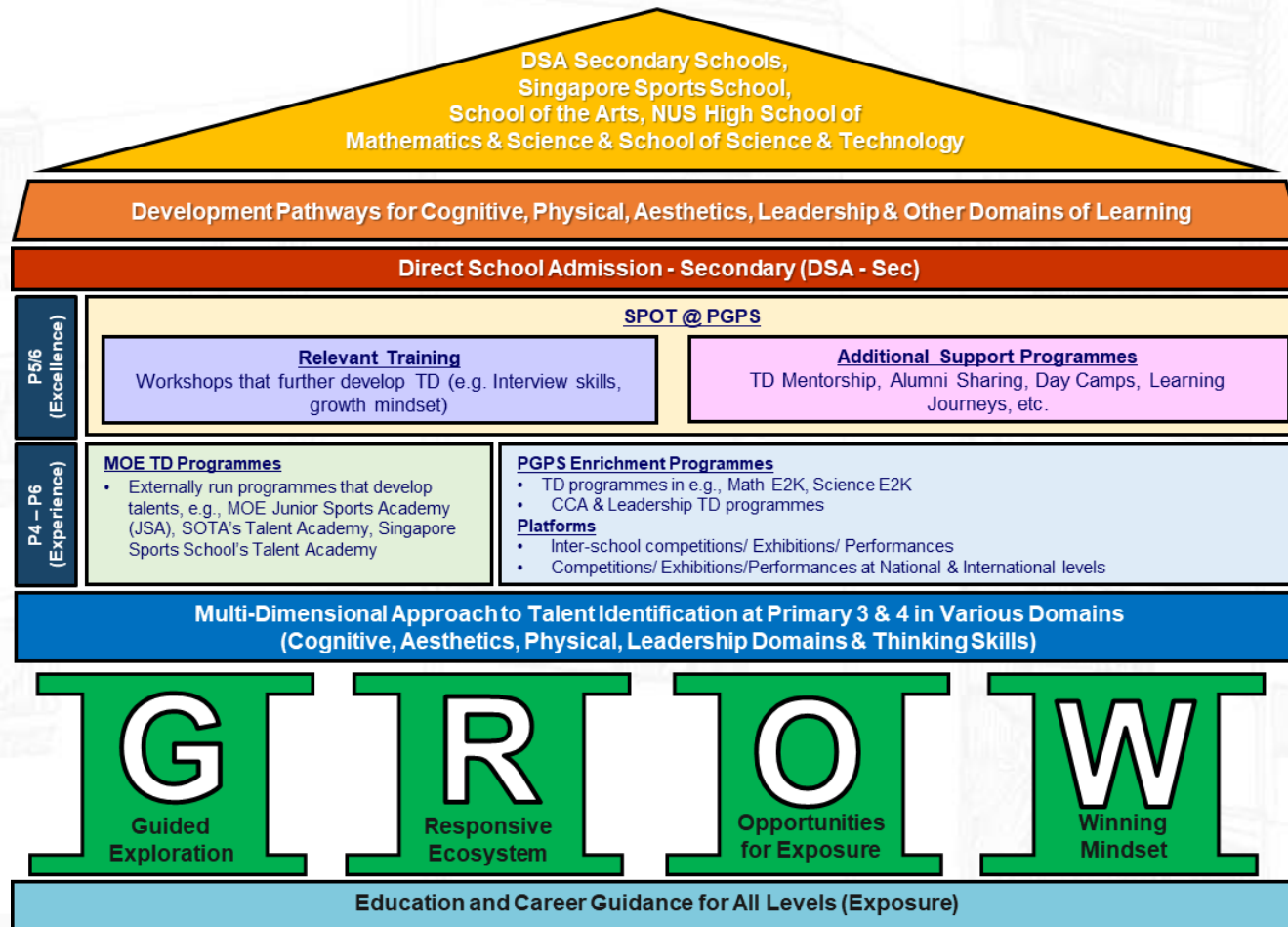
- Our student alumni, now in secondary schools, are invited to share authentic perspectives about secondary school life and factors to consider when selecting secondary schools.
- They also discussed the DSA process based on their own experiences.



DSA Support

- SLS packages (e.g. Shortlisting suitable secondary schools, Interview tips) are made available to support students who are interested to apply for DSA.

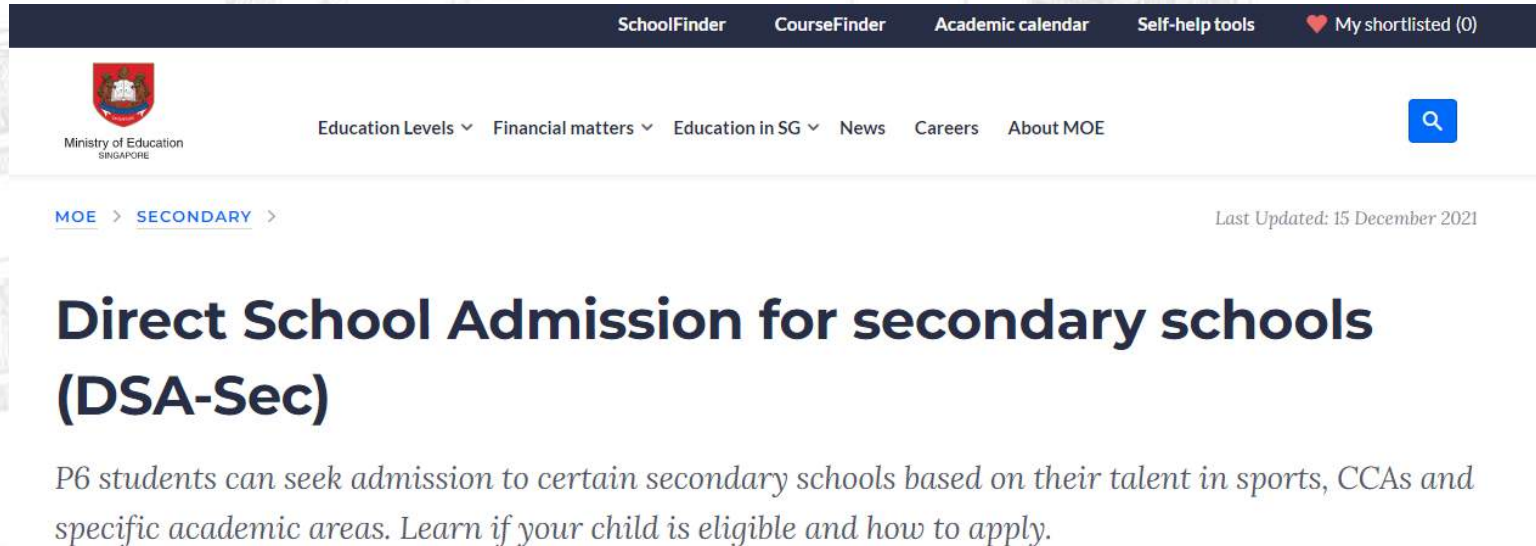
HOLISTIC DEVELOPMENT @ PGPS



- At PGPS, experiences are planned for all students to **discover their strengths and interests and make informed decisions on their educational journey.**
- As part of our Talent Development efforts, your child **may also be selected to participate in SPOT @ PGPS**, a programme offered to students who have demonstrated talent and strong personal qualities during their CCAs, classroom learning and/or school enrichment programmes.

For more information on DSA-SEC

<https://www.moe.gov.sg/secondary/dsa>



The screenshot shows the Ministry of Education (MOE) Singapore website. At the top, there is a navigation bar with links: SchoolFinder, CourseFinder, Academic calendar, Self-help tools, and My shortlisted (0). Below this is the MOE logo and a search bar. The main content area displays the breadcrumb 'MOE > SECONDARY >' and the title 'Direct School Admission for secondary schools (DSA-Sec)'. A sub-header states: 'P6 students can seek admission to certain secondary schools based on their talent in sports, CCAs and specific academic areas. Learn if your child is eligible and how to apply.' The page is dated 'Last Updated: 15 December 2021'.



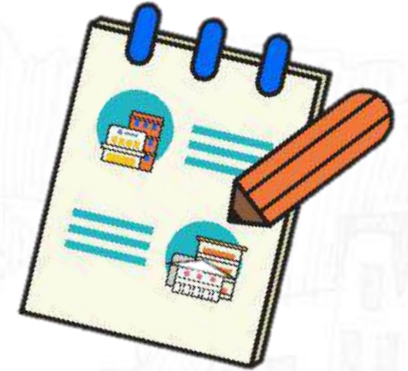


Information on PSLE Scoring and S1 Posting Exercise

FUTURE-READY LEADERS WITH THE HEART FOR OTHERS

WHAT IS THE INTENT OF THE PSLE?

1. A useful checkpoint at the end of primary school

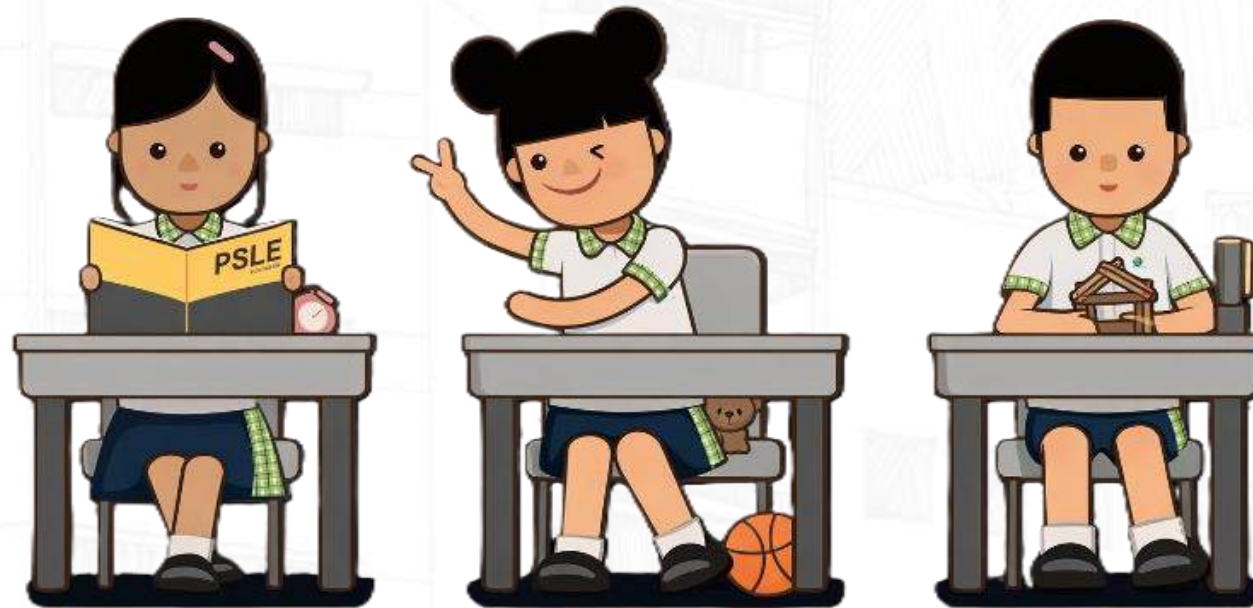


2. Allow students to gauge their strengths, interests and areas for growth



3. A fair tool to determine secondary school posting

HOW THE PSLE SCORING SYSTEM WORKS



From T-Score to Scoring Bands

From T-SCORE to Scoring Bands

The Achievement Level (AL)

- Students' AL for each subject reflect their actual level of achievement, not how they have performed relative to their peers.

AL	RAW MARK RANGE
1	≥ 90
2	85 – 89
3	80 – 84
4	75 – 79
5	65 – 74
6	45 – 64
7	20 – 44
8	< 20

GRADING OF FOUNDATION LEVEL SUBJECTS

- Foundation subject grades are graded in scoring bands from **AL A to C**.
- To derive a student's overall PSLE Score for S1 Posting, AL A to AL C for Foundation level subjects are **mapped to AL 6 to AL 8 of Standard level subjects respectively**.
- Similar to the PSLE T-score system, this mapping is based on the learning and assessment load of the subjects and informs students of how ready they are for the curriculum in secondary school.

FOUNDATION LEVEL AL	FOUNDATION RAW MARK RANGE	EQUIVALENT STANDARD LEVEL AL
A	75 – 100	6
B	30 – 74	7
C	< 30	8

GRADING OF MOTHER TONGUE EXEMPT STUDENTS

- For students exempted from MTL, due to extenuating circumstances, an MTL score will be assigned to them to get their overall PSLE score using a similar system as T-score:
 - Take reference from peers with similar scores for English, Mathematics and Science scores
 - Maintain parity of treatment with students who take Foundation MTL (who will score between AL 6 to AL 8)
 - Hence, students exempted from MTL will receive an MTL score between AL 6 to AL 8.

4 SUBJECT ALs WILL BE ADDED TO FORM THE OVERALL PSLE SCORE

- The PSLE Score can range from 4 to 32, with 4 being the best possible total score.
- Students are placed in secondary school based on their school choice order and school's cut-off AL score.

AN EXAMPLE OF HOW A STUDENT'S PSLE SCORE IS CALCULATED



English Language	AL3
Mother Tongue Language	AL2
Mathematics	AL1
Science	AL2
PSLE Score: 8	

Criteria for promotion to secondary school

Subjects taken at Standard level

Total AL
Score
30 or lower

and

***AL 7** or better in both
English and Math
(*ONLY if total AL falls in 26
to 30 range)



Progress to Mainstream
Secondary School

Subjects taken at Foundation level

Total AL Score
30 or lower

and

AL B or better in both
English and Math



Progress to Mainstream
Secondary School







Students who are not eligible to progress to mainstream secondary school, would be offered the option to repeat the PSLE, or progress to NorthLight School or Assumption Pathway School with their principal's endorsement.

USING HCL FOR ADMISSION INTO SAP SCHOOLS

- Students with better PSLE score will be posted first even if the student has not taken HCL in primary schools.
- ONLY if 2 students with same PSLE score apply for the same SAP school, student with better HCL will be posted first.

Students who obtained a Distinction/Merit/Pass for HCL at the PSLE and an overall PSLE Score of 14 or better will receive a posting advantage when applying to SAP schools.

Students will be considered for admission to SAP schools in the following order:

1st		7	NO HCL
2nd		8	DISTINCTION
3rd		8	MERIT
4th		8	PASS
5th		8	NO HCL
6th		9	DISTINCTION

Students with better PSLE Scores will be posted first, even if they did not take HCL.

Amongst students with the same PSLE Score, those with better HCL grades will be posted first.



ELIGIBILITY CRITERIA FOR HIGHER MOTHER TONGUE LANGUAGE (HMTL)

ELIGIBILITY CRITERIA FOR HMTL

- (i) An overall PSLE Score of **8 or better**
or
- (ii) An overall PSLE Score of **9 to 14 (inclusive); and** attain
 - **AL 1 / AL 2 in MTL or**
 - **Distinction / Merit in HMTL**

- The eligibility criteria for taking HMTL takes reference from past criteria.
- It ensures students can cope with the higher academic load.
- Secondary schools continue to have the flexibility to offer HMTL to students who do not meet the criteria if they:
 - have high ability and interest in MTL, and
 - are able to cope with the learning load required.

FIND OUT MORE ON THE PSLE-FSBB MICROSITE!



<https://go.gov.sg/pslefsbb>



OTHER RESOURCES

SchoolFinder Tool

**SCHOOL
FINDER**



<https://go.gov.sg/secschoolfinder>

ECG Parent Guide



<https://go.gov.sg/parent-guide>

Frequently Asked Questions

Is it a must for my child to go through DSA?

If my child is unsuccessful in DSA, what happens then?

Direct School Admission for secondary schools (DSA-Sec) seeks to broaden our recognition of talents and achievements beyond academic grades. Students can gain direct entry to certain secondary schools based on their talent in sports, CCAs and specific academic areas. However, **the DSA is not a pathway that suits every student**. To determine if DSA is an appropriate pathway for your child, you should **carefully consider your child's strengths and interests**, and the school's programmes and their ability to develop specific talent.

Students who do not wish to take part or are unsuccessful in DSA exercise will apply for secondary schools during the Secondary 1 (S1) Posting exercise that is based on the student's PSLE AL score.

Frequently Asked Questions

How many DSA applications can my child opt for?

You can indicate **up to 3 choices and 3 talent areas** and may indicate **up to 2 talent areas for the same school**. If you want to apply for 2 talent areas at the same school, you must indicate both as separate choices.

Note: *Do consider your choices carefully and manage your child's time and effort participating in multiple trials and interviews.*

Frequently Asked Questions

When applying for DSA, which school result is considered by the Secondary school? Do we need to provide proof?

Your child's primary school information will automatically be shared with the applied DSA-Sec school(s). This information includes your child's P5 and P6 academic results, and other information from P4 to P6, i.e. Co-curricular Activities (CCA), Values in Action (VIA) involvement, School-based achievements and awards such as Edusave awards, National School Games and Junior Sports Academy participation.

*You **do not** need to key in this information.

*Application will be done online through DSA-Sec Portal

Frequently Asked Questions

Can my child use certification obtained from outside to support the DSA-Sec application?

Yes. Certifications and participation obtained from both school and outside events that are relevant to the DSA talent area applied can be uploaded into the portal for the secondary school's consideration.

Frequently Asked Questions

Which secondary schools can be applied under DSA for example, Basketball, near Punggol?

You can use the filter option in **the MOE's SchoolFinder tool** to narrow down to the CCA choice and area.

**SCHOOL
FINDER**



Search for schools by area

Punggol

Admission type

- ☒ Direct School Admission (DSA)
- ☐ Integrated programme

DSA main Category

Sports and Games

DSA talent areas

Clear

Look up

Basketball (Boys) X

Frequently Asked Questions

If my child is offered a DSA-Sec place in secondary school, does he still need to meet the cut-off point for the secondary school's admission ?

To be successfully admitted to a school through DSA, your child's PSLE results must qualify them for the course offered by the school.

Hence, PSLE result is important even if a child already has a confirmed offer for DSA application.

How many DSA-Sec vacancies are offered by the participating DSA-Sec schools?

Integrated Programme (IP) schools generally admits about 30%-35% of their Secondary 1 IP intake through the DSA-Sec.

Other non-IP schools can admit up to 20% of their Secondary 1 intake through DSA-Sec.

Specialised independent schools such as NUS High School of Mathematics and Science, School of the Arts (SOTA), School of Science and Technology, Singapore Sports School can admit 100% of their student through the DSA-Sec.

THANK YOU FOR JOINING US TODAY & HAVE A LOVELY WEEKEND AHEAD!

