



Welcome to

# **Parents' Briefing Primary 6**

30 January 2026

**FUTURE-READY LEADERS WITH THE HEART FOR OTHERS**

# Outline Of Today's Sharing

1

Cyber Wellness

2

PSLE: Intent & The Scoring System

3

Full Subject-Based Banding & Secondary 1 Posting System

4

Choice of Secondary School & Direct School Admission

5

Strategies, Resources, FAQs



# Mdm Chua Pei Pei

Principal

FUTURE-READY LEADERS WITH THE HEART FOR OTHERS

# Cyber Wellness

It's more than saying no to devices.

# Why Should We Be Concerned about Cyber Wellness?

The data may surprise you.

## Did you know?

Our children are **going online from a younger age**.

**67%** of children aged 7 to 9, and **85%** for those aged 10 to 12 in Singapore use **smartphones** every day, and are active on **social media**.

However, research has shown that both **screen time** and **type of screen use** (educational vs recreational) can impact our **children's well-being**.

Source: Milieu Insights, [reported by the Straits Times](#) (Feb 2021)

## What does this mean?

We need to help our children achieve **balanced and purposeful** screen use.

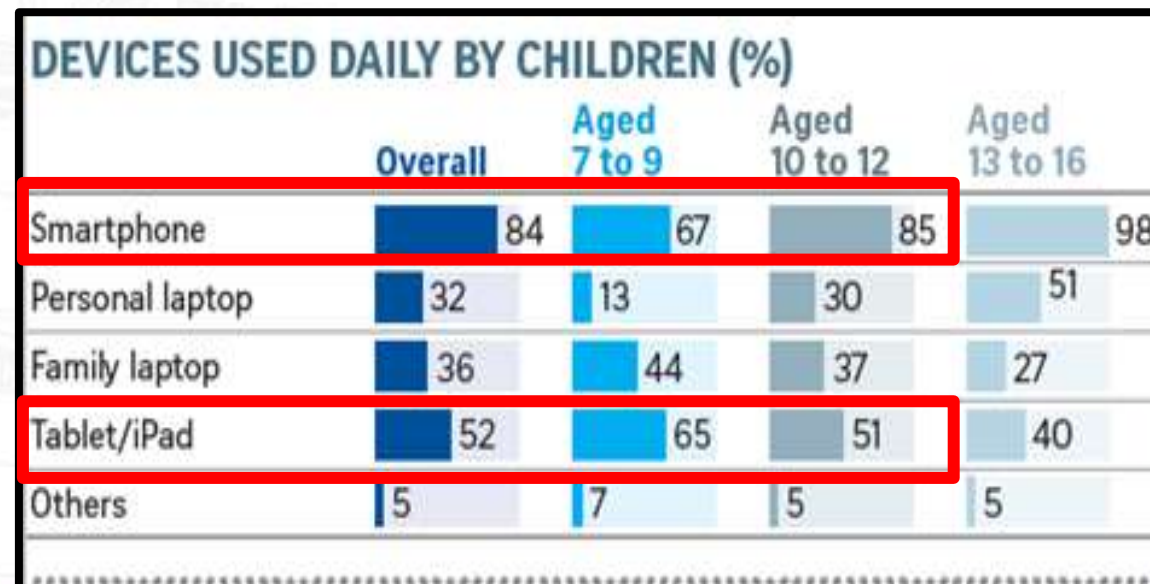
**#1** **Resources** on balanced and purposeful screen use are available at the end of the presentation.





**CURRENT REALITY**  
**Children are**  
**going online from a**  
**younger age**

**CURRENT REALITY**  
**Two-thirds of these**  
**children use a**  
**smartphone and/or**  
**a tablet/iPad daily.**



## Did you know?

A survey of 600 parents in Singapore revealed the types and frequency of **harmful content** our children are exposed to, including cyberbullying, sexual grooming, and sexual harassment.

However, **not all parents are aware** of the **online risks**.

Source: Milieu Insights, [reported by the Straits Times](#) (Feb 2021)

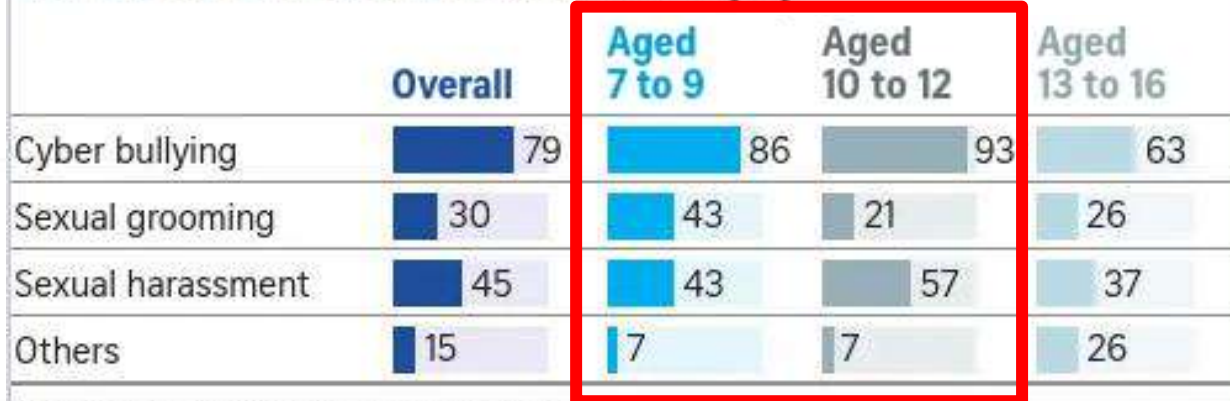
## What does this mean?

We need to be **involved** in our children's digital lives, and put in **parental controls** to keep them safe and role-model for responsible use.

**#2** **Resources** on parental controls are available at the end of the presentation.



## TYPES OF ONLINE HARASSMENT (%)



NOTE: This question was posed only to parents who reported that their children had faced online harassment. The poll is subject to a margin of error that is comparable with other research surveys.

Source: MILIEU INSIG  
STRAITS TIMES GRAPHICS

## CURRENT REALITY

**Types and frequency of harmful content our children are exposed to**

Source: Milieu Insights, *reported by the Straits Times* (Feb 2021)

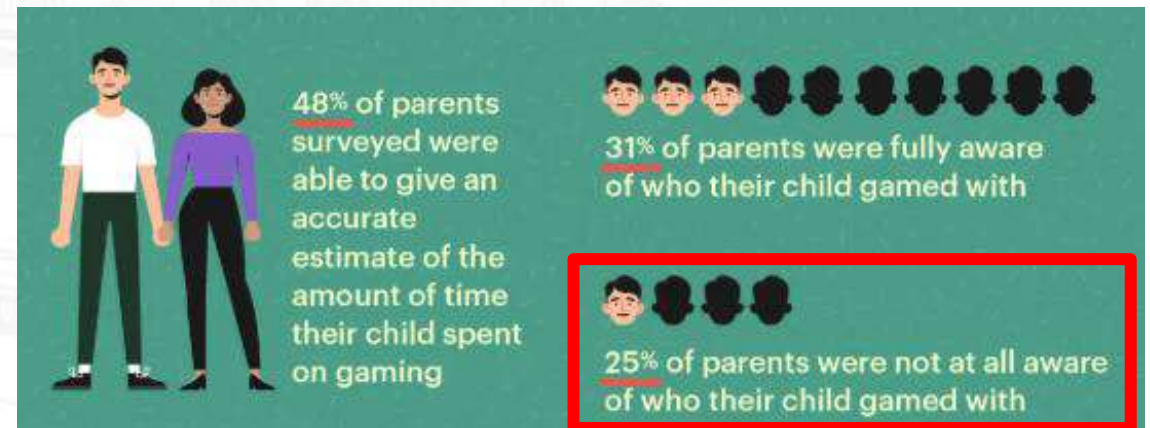
## Parents might not be aware, but...

**1 in 3** children has chatted with strangers online

**1 in 3** children has been exposed to pornographic materials

**1 in 4** children has overshared their personal information

Source: *MLC-TOUCH Parent Child Poll Findings* (30 Nov 2023)



Source: *MDDI Survey* (Feb 2024)

## Did you know?

Most social media platforms and popular games have **App Store age-ratings**:

- **12+** : WhatsApp, Instagram, Roblox
- **17+** : Telegram and Discord

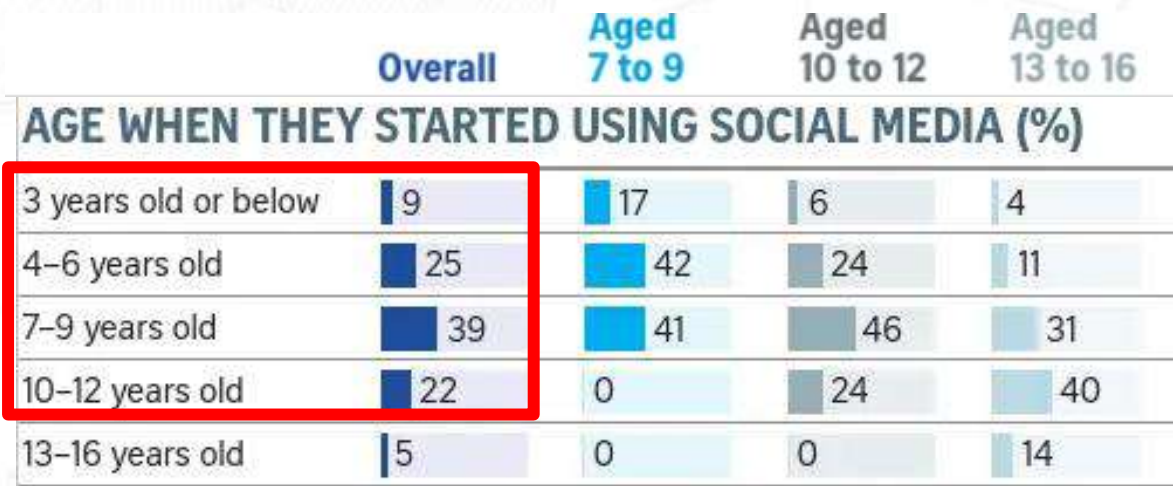
But the **majority of our children** have access to social media **before the recommended ages**.

Research shows that **screen use (smartphone and social media access) in young children** is associated with: insufficient good quality sleep, sedentary behaviours, obesity, and mental health and well-being .

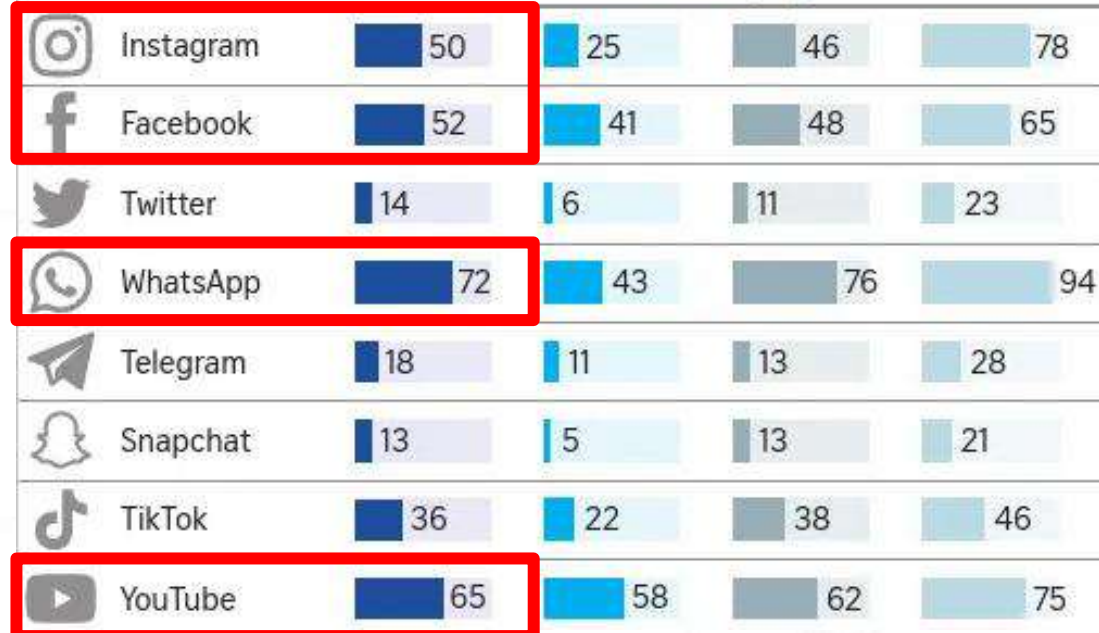
## What does this mean?

We need to ensure our children's use of devices and platforms are **age-appropriate**, and have **open conversations** with them about their digital habits.

**#3 Resources** from Grow Well SG are available at the end of the presentation.



#### TYPES OF PLATFORMS CHILDREN USE (%)



#### CURRENT REALITY

About  
a third  
of parents



with children aged  
seven to 12 said they  
had Instagram accounts

Source: Milieu Insights, *reported by the  
Straits Times* (Feb 2021)



# What is Cyber Wellness?

**Cyber Wellness** is the ability of our children and youth to navigate the cyberspace safely.

This is done through our **Character and Citizenship Education (CCE) curriculum** which aims to:

- **equip students with the knowledge and skills** to harness the power of Information and Communication Technology (ICT) **for positive purposes**;
- maintain a **positive presence in cyberspace**; and
- be **safe and responsible users of ICT**.

Through the curriculum, your child learns knowledge and skills to have **balanced screen use, be safe online, and exhibit positive online behaviours**.

## Resources

Scan here to find out more about MOE's Cyber Wellness curriculum:



<https://go.gov.sg/moe-cw-education>

# What Will Your Child Learn in School?

Find out what your child will learn about **Cyber Wellness** during **CCE (FTGP)\*** lessons and other programmes.

**\*Character and Citizenship Education (Form Teacher Guidance Period)**



# Primary 5 and 6

During  
CCE(FTGP)  
lessons,  
students will  
be taught:

## Be a positive peer influence online and manage digital footprints

- Speak up and stand for what is right regardless of peer pressure
- Seeking help from trusted adults/sources when needed
- Awareness of permanence of online data and review privacy settings

## Importance of cybersecurity

- Protect oneself from phishing, spam, scams and hacking

## How to verify online falsehoods

- Use S.U.R.E.\* to verify information online

## Staying Safe from Pornography

- Understand the impact of pornography on themselves and others
- Reject pornographic content using the 'Stop-Think-Do' strategy.
- Know that keeping, selling, sharing or forwarding pornographic materials is an offence

*S.U.R.E. stands for **S**ource, **U**nderstand, **R**esearch, **E**valuate.*

*It is part of National Library Board's Information Literacy Programme.*



Encourage our children to share their experiences as they navigate friendships.

# How Can We Partner Up?

Together, we can raise happy, kind and confident children, ready to thrive in the digital world.

# 3 areas we can work together on to foster School-Home Partnership

## 1 Respectful Communication

Our children do best when schools and parents work hand in hand to support them.

## 2 Role Models

## 3 Real Connections



# Respectful Communication

*Listen, understand, and foster kind words and actions between you and your child.*



## **Have regular and genuine conversations with your child**

- to better understand what they do online,
- how to stay safe,
- how to use technology in a responsible manner.



## **Communicate your actions and rationale.**

- Let your child know **you care for them** and **want them to be safe online.**



**Discuss with your child as you set parental controls** to manage device use and stay safe online.



**#4**

**Resources** on having open conversations about digital habits are available at the end of the presentation.



# Role Models

*You play a key role helping your child establish healthy digital habits and learn to use technology in a positive and meaningful way.*



**Role model healthy use of devices and social media, and good online behaviour** for your child/ward.

- E.g. parents/guardians not using devices during mealtimes, respectful online communication



**Role modelling respectful conversations.**

- You are in the best position to role model these skills through daily interactions with your child.
- **Listen to understand first**, instead of jumping straight into giving advice and solutions.



**#5 Resources** on role modelling respectful communication are available at the end of the presentation.



# Real Connections

*Cultivate strong relationships and healthy habits in this digital age.*



## Provide a safe space for conversations

- Children may hesitate to share their true thoughts and feelings with their parents, as they fear being judged or misunderstood.
- Let your child know that it is **normal to feel or think the way they do**. Help them **feel safe** expressing themselves with you.



## Provide a balanced mix of engaging online and offline activities

- **Discuss and develop a timetable** with your child to moderate their time spent on screens.
- Children aged 7 – 12 should have **consistent screen time limits** (less than 2 hours daily, excluding school work).



**#6 Resources** on providing a safe space for conversation are available at the end of the presentation.

# Additional Resources

Bite-sized practical tips and strategies to help you parent effectively in the digital age.

# Additional Resources:

## *Parenting for Wellness*



For more bite-sized, practical tips and strategies on building strong parent-child relationships, supporting your child's mental well-being and parenting in the digital age, scan the QR code above to download a copy of the **Parenting for Wellness Toolbox for Parents**.

You can also access the **Parenting for Wellness website** on Parent Hub (hosted by HPB) for personalised access to the full content!

Scan here to  
access the PfW  
Toolbox for Parents:



## *Positive Use Guide on Technology and Social Media*

Scan here to access  
the Positive Use Guide:



The **Positive Use Guide on Technology and Social Media** draws on research to support families as they navigate the digital landscape together. It offers strategies for balanced screen time, how to build healthier digital habits and provides tools like self-check worksheets and curated resources. Scan the QR code on the left to access the guide on the Digital for Life website.

### Positive Use Guide

Evidence-Based Insights on the Impact of Digital Devices  
on Child and Adolescent Wellbeing



# Compilation of Useful Resources

You can access all digital parenting resources shared throughout this slide deck by scanning this QR code.

**#15 Resources** on tips and strategies to support your child when they might be a cyberbully are available at the end of the presentation.

These resources focus on:

- Managing Device Use
- Respectful Communication
- Role-modelling healthy habits
- Fostering Real Connections
- Unlocking their First Smartphone or Smartwatch
- Playing Online Games
- Accessing their First Social Media Accounts
- Cyberbullying
- Parenting for Wellness
- Positive Use Guide
- Grow Well SG



<https://go.gov.sg/cwresources-parents>



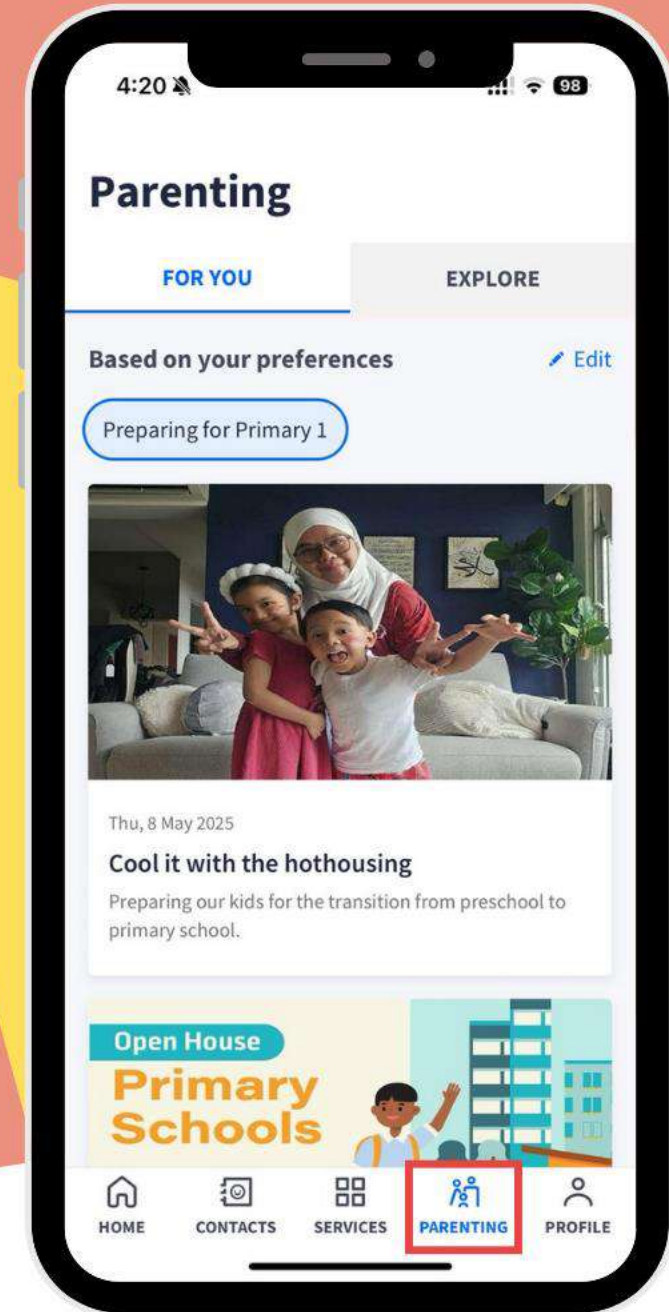




# Parenting Resources on Parents Gateway (PG)



Discover rich and customisable parenting resources on topics such as preparing for Primary 1, forging parent-child relationships and education pathways.







# Begin your parenting journey with us

**@parentingwith.moesg**

Follow us on Instagram for bite-sized and actionable parenting tips to tackle the everyday demands of parenting.



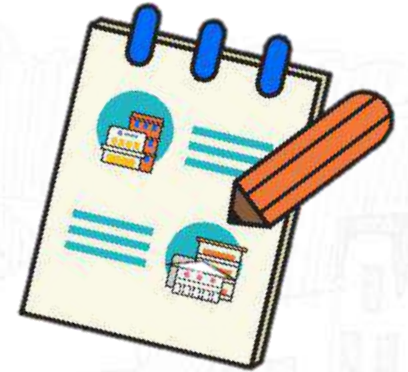
# PSLE AND HOW IT WORKS





# WHAT IS THE INTENT OF THE PSLE?

1. A useful checkpoint at the end of primary school



2. Allow students to gauge their strengths, interests and areas for growth



3. A fair tool to determine secondary school posting

# HOW THE PSLE SCORING SYSTEM WORKS



## From T-Score to Scoring Bands

# From T-SCORE to Scoring Bands

## The Achievement Level (AL)

- Students' AL for each subject reflect their actual level of achievement, not how they have performed relative to their peers.

AL	RAW MARK RANGE
1	$\geq 90$
2	85 – 89
3	80 – 84
4	75 – 79
5	65 – 74
6	45 – 64
7	20 – 44
8	$< 20$



# GRADING OF FOUNDATION LEVEL SUBJECTS

- Foundation subject grades are graded in scoring bands from **AL A to C**.
- To derive a student's overall PSLE Score for S1 Posting, AL A to AL C for Foundation level subjects are **mapped to AL 6 to AL 8 of Standard level subjects respectively**.
- Similar to the PSLE T-score system, this mapping is based on the learning and assessment load of the subjects and informs students of how ready they are for the curriculum in secondary school.

FOUNDATION LEVEL AL	FOUNDATION RAW MARK RANGE	EQUIVALENT STANDARD LEVEL AL
A	75 – 100	6
B	30 – 74	7
C	< 30	8

# GRADING OF MOTHER TONGUE EXEMPT STUDENTS

- For students exempted from MTL, due to extenuating circumstances, an MTL score will be assigned to them to get their overall PSLE score using a similar system as T-score:
  - Take reference from peers with similar scores for English, Mathematics and Science scores
  - Maintain parity of treatment with students who take Foundation MTL (who will score between AL 6 to AL 8)
  - Hence, students exempted from MTL will receive an MTL score between AL 6 to AL 8.

# 4 SUBJECT ALs WILL BE ADDED TO FORM THE OVERALL PSLE SCORE

- The PSLE Score can range from 4 to 32, with 4 being the best possible total score.
- Students are placed in secondary school based on their school choice order and school's cut-off AL score.

## AN EXAMPLE OF HOW A STUDENT'S PSLE SCORE IS CALCULATED



English Language	AL3
Mother Tongue Language	AL2
Mathematics	AL1
Science	AL2
<b>PSLE Score: 8</b>	

# Criteria for promotion to secondary school

## Subjects taken at Standard level

Total AL  
Score  
30 or lower

and

\***AL 7** or better in both  
**English and Math**  
(\*ONLY if total AL falls in 26  
to 30 range)



Progress to Mainstream  
Secondary School

## Subjects taken at Foundation level

Total AL Score  
30 or lower

and

**AL B** or better in both  
**English and Math**



Progress to Mainstream  
Secondary School

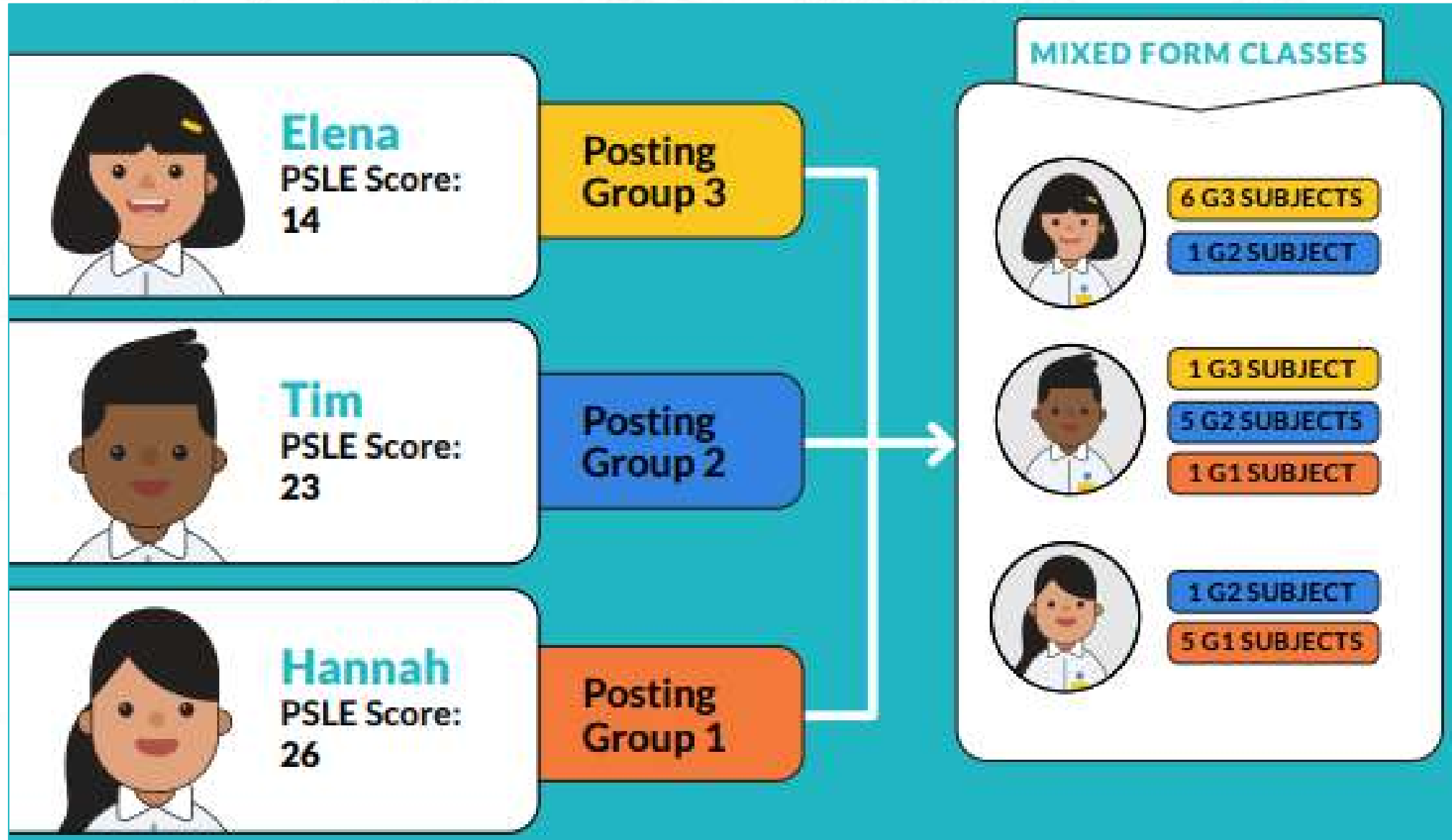
Students who are not eligible to progress to mainstream secondary school, would be offered the option to repeat the PSLE, or progress to NorthLight School or Assumption Pathway School with their principal's endorsement.



# Overall PSLE SCORE and placement outcome

PSLE Score	Posting Group	Subject level for most subjects
4 – 20	3	G3
21 and 22	2 or 3	G2 or G3
23 and 24	2	G2
25	1 or 2	G1 or G2
26 – 30 (with AL 7 in EL and MA)	1	G1

# Overall PSLE SCORE and Placement Outcome - Example



# ELIGIBILITY CRITERIA FOR HIGHER MOTHER TONGUE LANGUAGE (HMTL)

## ELIGIBILITY CRITERIA FOR HMTL

- (i) An overall PSLE Score of **8 or better**  
or
- (ii) An overall PSLE Score of **9 to 14 (inclusive); and** attain
  - **AL 1 / AL 2 in MTL or**
  - **Distinction / Merit in HMTL**

- The eligibility criteria for taking HMTL takes reference from past criteria.
- It ensures students can cope with the higher academic load.
- Secondary schools continue to have the flexibility to offer HMTL to students who do not meet the criteria if they:
  - have high ability and interest in MTL, and
  - are able to cope with the learning load required.

# **Full Subject Based Banding (SBB) (Secondary)**



**One Secondary Education  
Many Subject Bands**



# FULL SUBJECT-BASED BANDING (FULL SBB) TIMELINE

Link to PSLE-FSBB Microsite



<https://go.gov.sg/pslefsbb>



2020

Full SBB pilot commenced in 28 secondary schools. Feedback from pilot schools has been positive.

31  
schools

2022

Full SBB will continue to be rolled out to more schools in phases.

Next  
phase of  
schools

2023

Final  
phase of  
schools

2024

From 2024,

- There will no longer be Express, N(A) and N(T) courses.
- Students will be able to study subjects at different levels that suit their interests, strengths and learning needs.

Common  
National  
Exam

2027

From 2027, students will sit for a common national examination and receive a new national certification with subjects at different levels.

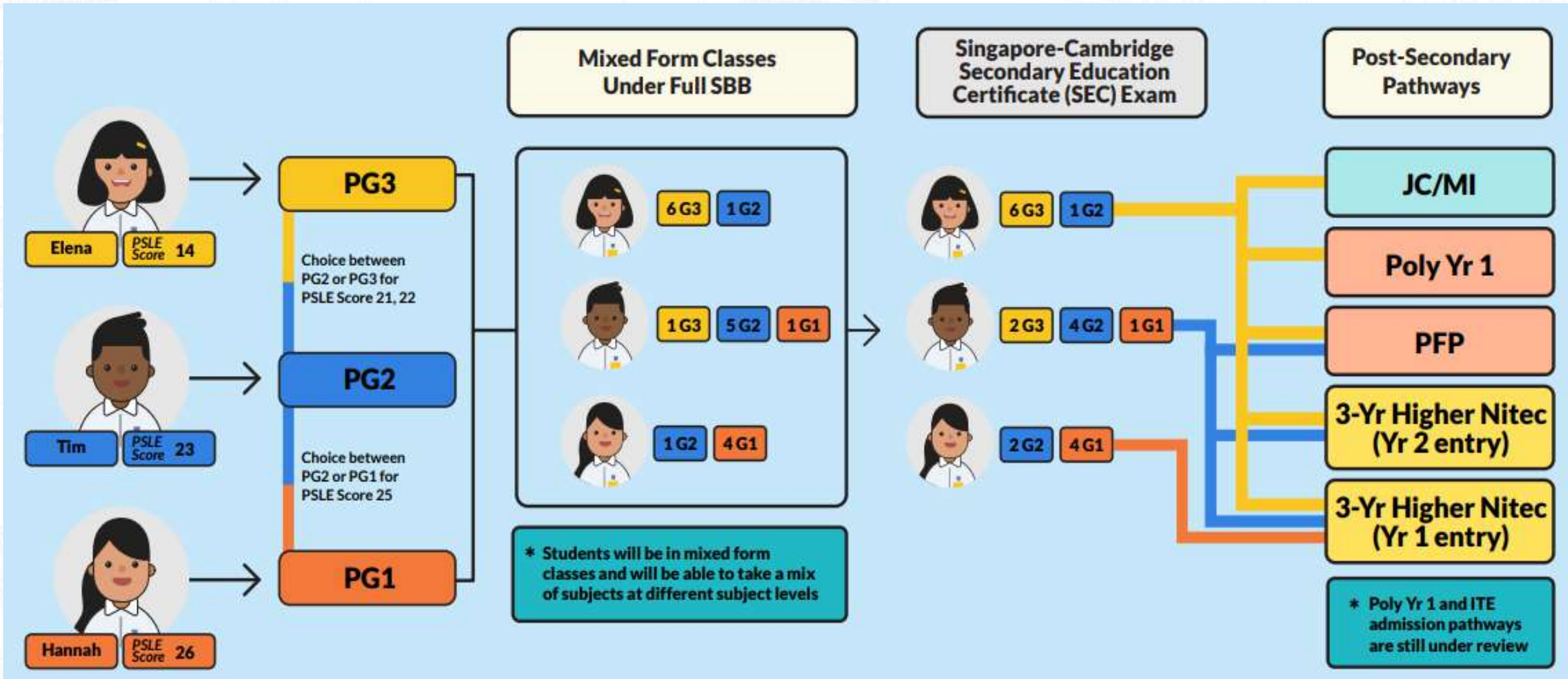
# FULL SUBJECT-BASED BANDING (FULL SBB)

- The following are changes that students will experience under Full SBB from 2024:

- Removal of Express, N(A) and N(T) courses  
*(Replaced with posting groups, PG1, PG2 and PG3)*
- Mixed form classes
- Offering subjects at a more demanding level, including Humanities subjects
- Common National Examinations  
*(Singapore-Cambridge Secondary Education Certificate (SEC) Exam)*



# FULL SUBJECT-BASED BANDING (SECONDARY) AND BEYOND





# Primary School → Secondary School

**S1 Posting  
Exercise**

**Choice**

**Choice**

**Direct School  
Admission-  
Secondary  
(DSA - Sec)**





# Pathways to Secondary School



## PSLE/S1 Posting Exercise

- Based on a student's **PSLE score (Total AL score)**
- **Most students enter secondary schools this way**



## Direct School Admission-Secondary (DSA - Sec)


- Based on a diverse range of **talents and achievements in specific academic subjects or non-academic areas, beyond what the PSLE recognizes**
- Allows students to **access school programmes to develop their talents**

# UNDERSTANDING HOW THE S1 POSTING SYSTEM WORKS





# CHOICE ORDER of Schools Matters!

- Students continue to have six choices in selecting their secondary schools.
- Similar to past years, students continue to be posted to a secondary school based on academic merit, i.e., PSLE Score, and their school choice order.
- If there are two or more students with the same PSLE Score vying for the last remaining place(s) in a school, the following **tie-breakers** will be used in the following order:
  1. **CITIZENSHIP**
  2. **CHOICE ORDER OF SCHOOLS** (New tie-breaker from 2021 onwards) 
  3. **COMPUTERISED BALLOTING**

The new tie-breaker based on school choice order recognises the different considerations that families have in making school choices.

# Tie-breakers

## in the new S1 Posting System

Tie-breakers are used only if there are two or more students with the same PSLE Score vying for the last available place(s) in a school.

5 students are vying for the last places in the schools of their choice.

**Jane**

Singapore  
Citizen

16 pts

SCHOOL CHOICES:

- 1) Sch A
- 2) Sch ...
- 3) Sch ...
- 4) Sch ...



**Bryan**

Singapore  
Citizen

20 pts

SCHOOL CHOICES:

- 1) Sch B
- 2) Sch ...
- 3) Sch ...
- 4) Sch ...



**Mary**

Singapore  
Citizen

20 pts

SCHOOL CHOICES:

- 1) Sch A
- 2) Sch B
- 3) Sch C
- 4) Sch ...



**Alan**

Permanent  
Resident

20 pts

SCHOOL CHOICES:

- 1) Sch A
- 2) Sch B
- 3) Sch D
- 4) Sch ...



**Rina**

Permanent  
Resident

20 pts

SCHOOL CHOICES:

- 1) Sch A
- 2) Sch B
- 3) Sch D
- 4) Sch E



Students with better scores will be posted first

Tie-breaker #1:  
Citizenship

Tie-breaker #2:  
Choice order of schools

Tie-breaker #3:  
Computerised balloting

Jane has a better PSLE score. She will be posted first, to **School A**.



Bryan, Mary, Alan and Rina have the same score.

As Jane has taken the last available place in School A, Bryan, Mary, Alan and Rina will vie for the last available place in their next choice, **School B**.

Bryan and Mary are Singapore Citizens. They will have priority to enter **School B**.



Alan and Rina will be tie-broken out as they are Permanent Residents. They will be considered for their next choice, **School D**.

Because Bryan ranked School B higher than Mary, he will be posted to **School B**.



Since Bryan has taken the last place in School B, Mary will be posted to **School C**.



Alan and Rina have both ranked School D as their third choice. They will go through computerised balloting to vie for the last remaining place in **School D**.

Through computerised balloting, Alan is posted to **School D**.



Since Alan has taken the last place in School D, Rina will be posted to her fourth choice, **School E**.











# USING HCL FOR ADMISSION INTO SAP SCHOOLS

- Students with better PSLE score will be posted first even if the student has not taken HCL in primary schools.
- ONLY if 2 students with same PSLE score apply for the same SAP school, student with better HCL will be posted first.

Students who obtained a Distinction/Merit/Pass for HCL at the PSLE and an overall PSLE Score of 14 or better will receive a posting advantage when applying to SAP schools.

Students will be considered for admission to SAP schools in the following order:

1st		7	NO HCL
2nd		8	DISTINCTION
3rd		8	MERIT
4th		8	PASS
5th		8	NO HCL
6th		9	DISTINCTION

Students with better PSLE Scores will be posted first, even if they did not take HCL.

Amongst students with the same PSLE Score, those with better HCL grades will be posted first.



# CHOICE OF SECONDARY SCHOOL



# SCHOOL CHOICE JOURNEY

- The PSLE Score ranges are a **useful reference point** for parents and students to consider secondary schools.
- Use this information, together with other **important factors** such as the
  - **secondary schools' distinctive programmes**
  - **CCAs**
  - **ethos and cultures**
  - **proximity to home**to shortlist schools that would best fit the educational needs of the student.





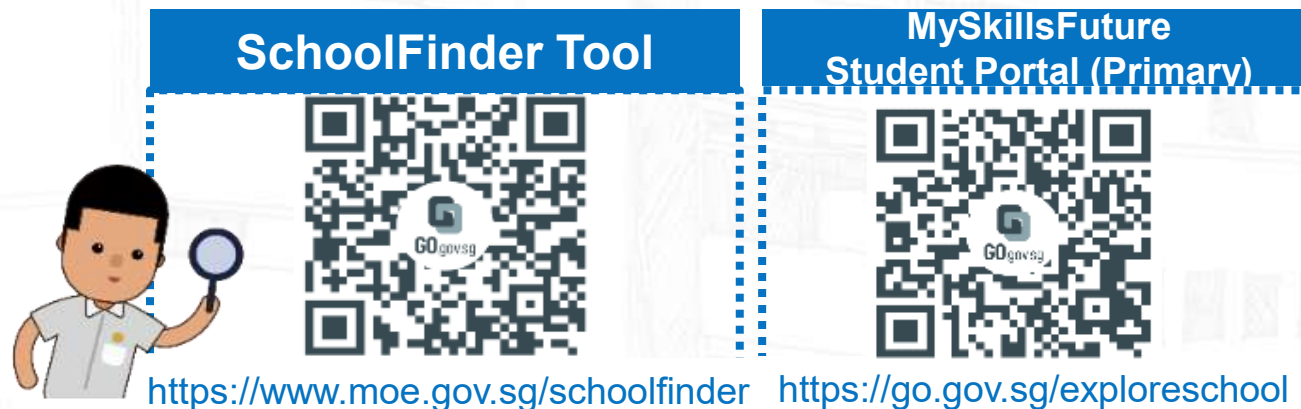
# PSLE SCORE RANGES FOR INDIVIDUAL SECONDARY SCHOOLS





# PSLE SCORE RANGES FOR ALL SECONDARY SCHOOLS

- Use the PSLE Score ranges as a reference alongside other important factors, such as the school's distinctive programmes, Co-Curricular Activities (CCA), culture, ethos, and proximity to home when shortlisting school choices that would best fit your child's educational needs.
- The 2025 PSLE Score ranges for individual secondary schools will be available for your reference on <https://moe.gov.sg/schoolfinder> and <https://go.gov.sg/exploreschools>. They reflect the PSLE scores of the student posted into these schools at the 2025 S1 Posting Exercise.
- A school's **PSLE Score range** (including Cut-Off-Point) for a particular year is not pre-determined before the posting, and **may vary from year to year**, depending on the current cohort's PSLE results and their school choices in the current year's S1 Posting Exercise.



# PSLE SCORE RANGES FOR INDIVIDUAL SECONDARY SCHOOLS

The PSLE Score range refers to the PSLE Score of the first and last student admitted to a particular school in the previous year via the S1 Posting Exercise. This shows the range of student profiles who enter each school.

	Affiliated	Non-affiliated
Posting Group 3	-	9 - 16
Posting Group 2	-	21 - 22
Posting Group 1	-	25 - 26

## Example

PSLE Score range of 2023

PSLE Score of the first student posted into the school in the respective posting group (PG)

PSLE Score of the last student posted into the school in the respective posting group (PG) [i.e., the school's **Cut-Off Point (COP)**]



# PSLE SCORE RANGES (REFLECTING HCL) FOR INDIVIDUAL SECONDARY SCHOOLS

The PSLE Score range refers to the PSLE Score of the first and last student admitted to a particular school in the previous year via the S1 Posting Exercise. This shows the range of student profiles who enter each school.

	Affiliated	Non-affiliated
Posting Group 1	-	5(D) - 12
Posting Group 2	-	-
Posting Group 3	-	-

## Example

PSLE Score range of 2023  
(reflecting HCL score)

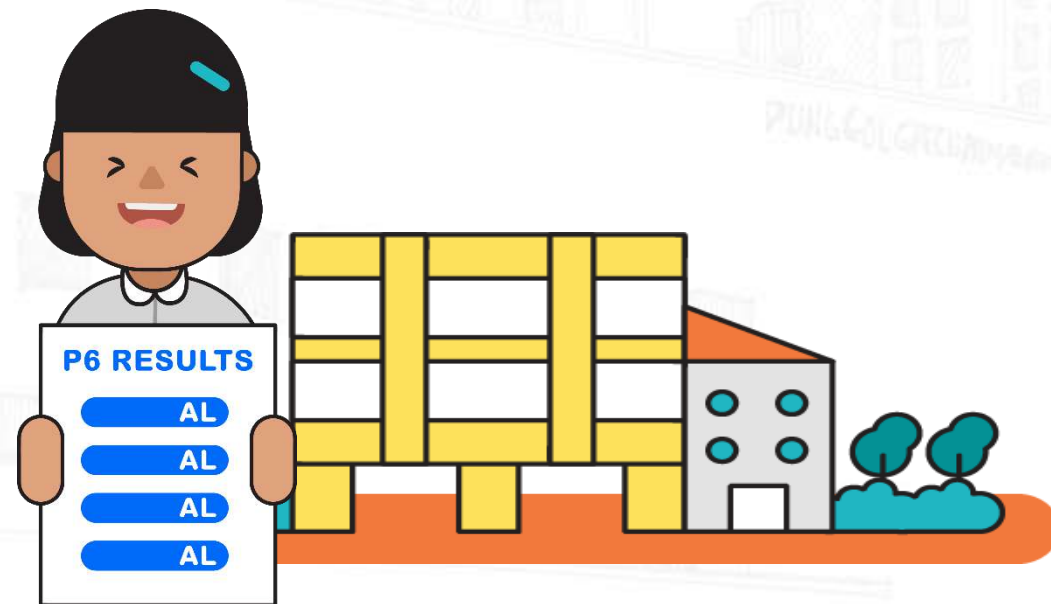
Scoring for HMTL subjects:  
D → Distinction  
M → Merit  
P → Pass

PSLE Score of the first student posted into the school in the respective posting group (PG)

PSLE Score of the last student posted into the school in the respective posting group (PG)  
[i.e., the school's **Cut-Off Point (COP)**]



# PREPARING FOR THE S1 POSTING EXERCISE

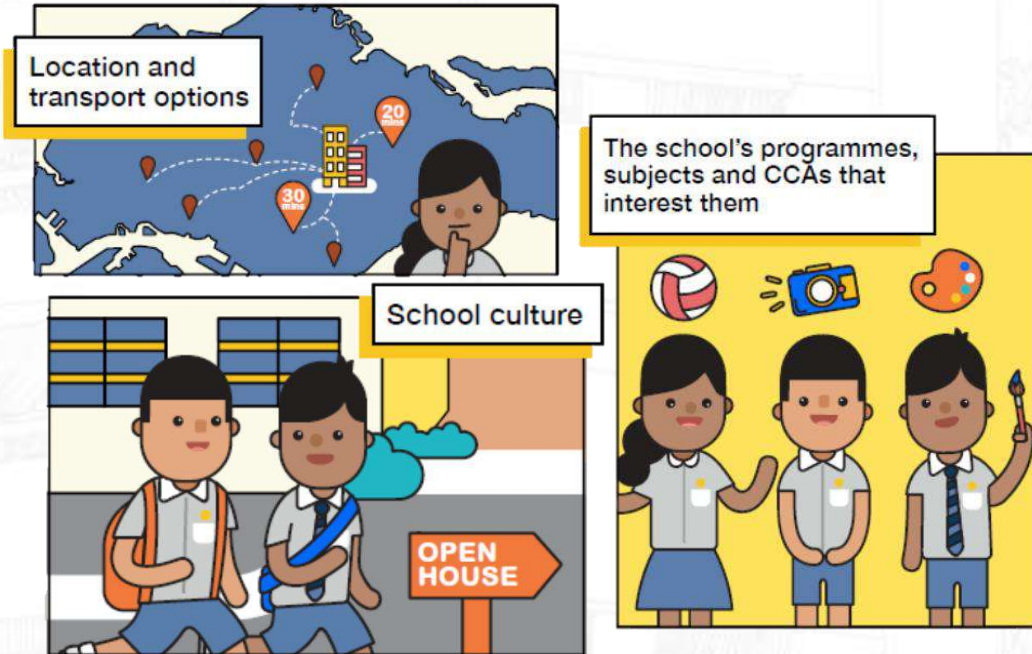


Use **all 6 options** with a range of Cut-off Points as this will increase your child's chances of being posted to a school of his/her choice.

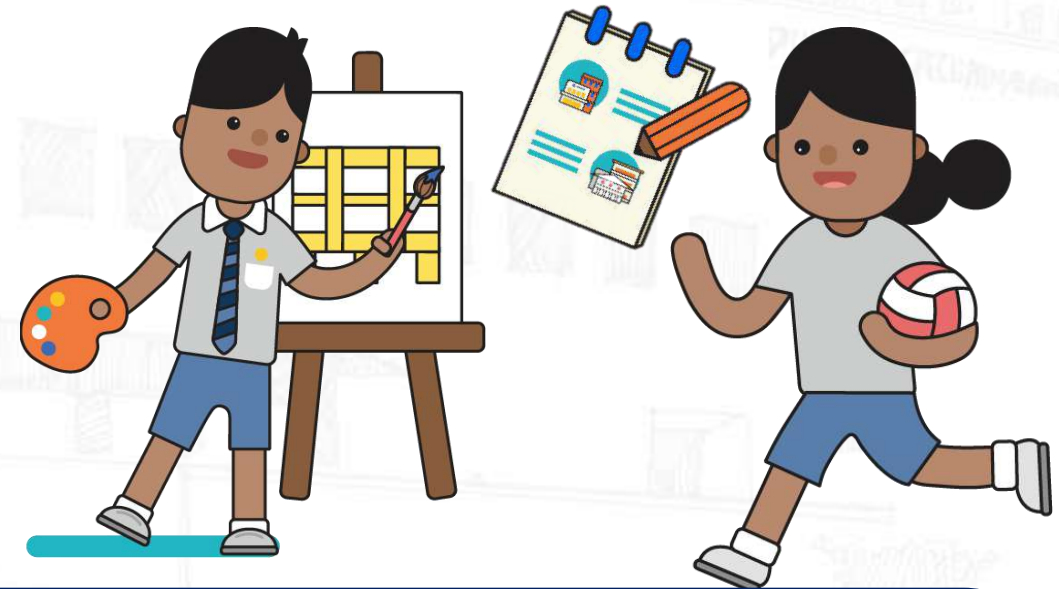
Take reference from schools' PSLE Score ranges, which serves as a guide for you and your child to shortlist school choices. Consider at least 2-3 schools where your child's PSLE Score is better than the school's Cut-off Point.



# PREPARING FOR THE S1 POSTING EXERCISE



Shortlist schools that offer programmes that cater to your child's strengths and interests, and that provide suitable learning environments.



Rank your child's preferred school higher in the school choice order. This will increase your child's chances of being posted to that school, if tie-breakers are required.

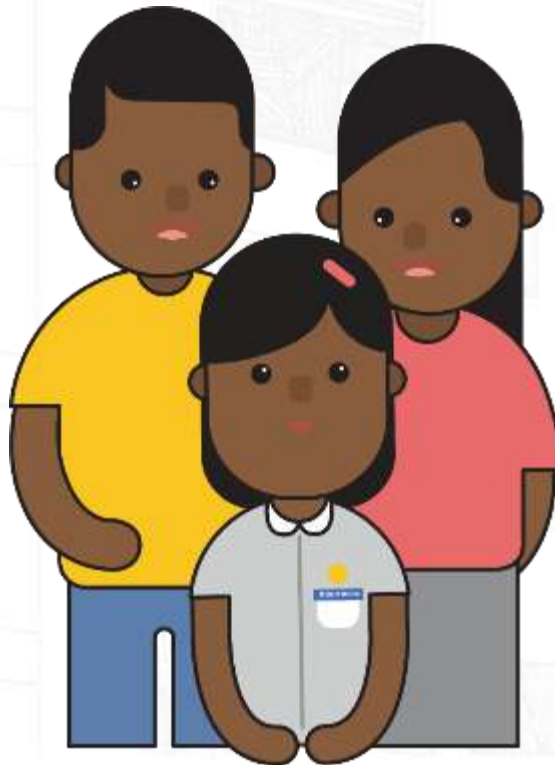
## Tips for Parents in Choosing Secondary Schools

Be open and flexible when discussing your child's preferences, needs and choices.

Manage your own expectations and do not project these expectations onto your child.

Have regular conversations with your child to understand more about his/her interests and aspirations.

Affirm your child and offer support when he/she shares his/her plans with you.





# FIND OUT MORE ON THE PSLE-FSBB MICROSITE



<https://go.gov.sg/pslefsbb>



# **Direct School Admission-Secondary (DSA-Sec)**





# What is DSA-Sec?

Direct School Admission for secondary schools (DSA-Sec) allows students to gain direct entry to certain secondary schools **based on their talent in sports, CCAs, leadership and specific academic areas**, before taking the PSLE.



# Who should consider DSA-SEC?

- DSA recognises students who have a **strong interest or talent** that can be further developed in secondary schools.
- Consider if your child has an interest that they are **passionate** about.
- Has your child been **consistently pursuing** a particular talent/ interest for a **significant period of time** in primary school?



# Who should consider DSA-SEC?

**P6 students can apply for DSA-Sec based on a wide-range of talents, including:**

- Sports and Games
- Visual, Literary and Performing Arts
- Debate and Public Speaking
- Science, Mathematics and Engineering
- Languages and Humanities
- Uniformed Groups
- Leadership (For example, Prefects)

*Applicants who do not have prior experience may also apply.*

*The school will assess applicants based on the selection criteria, which may include assessing the potential of the applicants.*



# DSA-Sec Selection Criteria

Schools have **different selection criteria**, but in general, applicants must be able to demonstrate a high level of ability in that talent area.

For example, your child might have:

- represented the school in a CCA
- held a prominent role in a play or performance
- Shown talent in oratorical skills or creative writing
- held a leadership role in class or a CCA

## **Note:**

**Academic results and non-academic school-based achievements will be shared automatically to the school that you have chosen.**

# DSA Timeline



Jan - May



May-June



Mid-September



End-October



End-November



**Explore  
school  
choices**

Visit schools' websites for their selection process and schedule



**Apply through  
DSA-Sec Portal**



**Attend e-interviews  
and e-auditions**

ONLY for shortlisted candidates.  
Secondary schools will inform you of the DSA outcome by late September.



**Select preferred  
Secondary schools**

Choose up to 3 choices in order of preference if you receive offer from multiple schools.



**Receive school  
allocation results  
along with PSLE  
results**

# Strategies & Resources for Parents





# Strategies to Achieve Excellence

- Set high expectations but encourage small progress and affirm good effort
- Plan your holidays
  - **Extra lessons planned during last week of June holidays**
  - **Extra lessons during last 2 days of September holidays**
- Set routines and adopt good habits such as setting limits to use of handphones, playing of computer games and getting a good night's sleep

# Strategies to Achieve Excellence

- Adopt a whole family approach and encourage a healthy lifestyle
- Work closely with your child's teachers
- Balance and manage tuition work (if any)





# A CHAMPION MINDSET



## C CHALLENGE YOURSELF

Have a constant drive to be better than what you are now.

H

## A AMBITION

M Set goals for yourself and strive to achieve defined goals.

## P POSITIVE THINKING

Have faith in yourself and be confident that you CAN succeed.

I

## O CONVICTION

N Pick yourself up from failures and persevere.

N



# OTHER RESOURCES

## 1 SchoolFinder Tool

**SCHOOL  
FINDER**



<https://go.gov.sg/secschoolfinder>

## 2 How-to-Guide SchoolFinder



<https://go.gov.sg/schoolfinder-how-to-guide>

## 3 “Welcome to Secondary School” video



<https://go.gov.sg/welcome-to-secondary-school>

## 4 ECG Parent Guide



<https://go.gov.sg/parent-guide>

# Frequently Asked Questions

## After school activities related Questions

### When will CCA activities stand down?

Primary 6 students will officially **stand down from CCAs from Term 3 onwards**. This is to allow students more time to revise their work and prepare for PSLE in Term 3 and 4.

### What is the schedule for P6 supplementary during school holidays?

It is **currently planned to take place during the last week of the June holidays and last two days of September holidays**. Details on the holiday schedule will be shared via Parents Gateway at a later date.

# Frequently Asked Questions

## DSA related Questions

**If my child is offered a DSA-Sec place in secondary school, does he still need to meet the cut-off point for the secondary school's admission?**

To be successfully admitted to a school through DSA, your child's PSLE results must qualify them for the PG offered by the school.

Hence, PSLE result is important even if a child already has a confirmed offer for DSA application.

**Can we apply for DSA after the release of the PSLE results?**

DSA-Sec enables P6 students to secure places in secondary schools prior to sitting for the PSLE. Parents must submit DSA applications during the designated application window, which typically opens in May. Students who did not apply for DSA or are unsuccessful in their DSA application will take part in the S1 posting exercise after the release of PSLE results.



# Frequently Asked Questions

## DSA related Questions

**When applying for DSA, which school result is considered by the Secondary school? Do we need to provide proof?**

Your child's primary school information will automatically be shared with the applied DSA-Sec school(s). This information includes your child's P5 and P6 academic results, and other information from P4 to P6, i.e. Co-curricular Activities (CCA), Values in Action (VIA) involvement, School-based achievements and awards such as Edusave awards, National School Games and Junior Sports Academy participation.

\*You **do not** need to key in this information.

\*Application will be done online through DSA-Sec Portal

# Frequently Asked Questions

## DSA related Questions

### When you enter Secondary school through DSA, does it mean you cannot change CCA in Secondary school?

You are **expected to be committed to the CCA**. Students must commit to the chosen school for the duration of the programme. However, if the situation changes, you can always approach the secondary school for advice.

### What kind of support will the school provide a child who is applying for DSA-Sec?

Depending on the DSA talent area applied for, the **school can offer support where applicable**:

- DSA visual arts – School will support students in giving feedback to improve their portfolio
- DSA Sports/performing arts (For a sport that is an offered CCA in PGPS) – Time and space may be made available to the student for their extra practice when preparing for try-outs/audition
- If interview sessions are arranged, they may seek advice from their FT or CCA teacher. SLS packages are made available to support them.

# Frequently Asked Questions

## DSA related Questions

### How many DSA-Sec vacancies are offered by the participating DSA-Sec schools?

Integrated Programme (IP) schools generally admits about **30%-35%** of their Secondary 1 IP intake through the DSA-Sec.

Other non-IP schools can admit up to **20%** of their Secondary 1 intake through DSA-Sec.

Specialised independent schools such as NUS High School of Mathematics and Science, School of the Arts (SOTA), School of Science and Technology, Singapore Sports School **can admit 100% of their student through the DSA-Sec.**



# **THANK YOU FOR JOINING US TODAY & HAVE A LOVELY WEEKEND AHEAD!**

